

***LINCOLN CENT
OVER MINTMARKS***

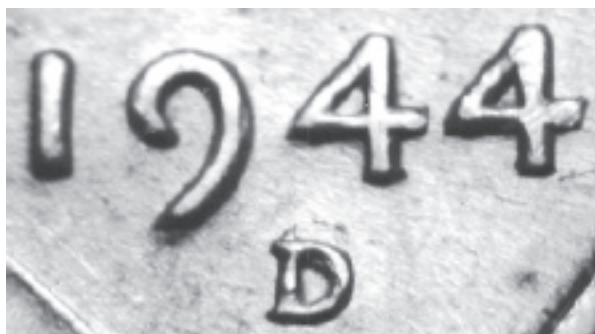
1944-D/S

OMM-001

Cross Reference: WOMM-001, FS-20, OMM #1, Breen 2177

Description: *Over Mintmark.*

A very strong S mintmark is seen above and through the middle of the D mintmark. The serif and upper curve of the S is seen above the D. The middle bar of the S is seen directly below the top of the D. The lower right curve of the S is seen along the lower right side of the D.



Die Markers:

Obverse - Die scratch from the top of the 1 toward the rim.

Reverse - None noted.

VF XF AU MS60 MS63 MS65RD

Value : 75 125 200 250 450 1300

ANACS Pop.: [51] (4) 65RD, (10) 64RD, (3) 64RB

Comments : One of the most sought after over mintmarks of any series, this variety commands a great premium. It would seem that the engraver first punched the D over the S without effacing the S. Then he tried to remove the top part of the S above the D. This is based on the fact that the portions of the S under or around the D are fully raised and rounded. The top of the S is very thin and flat.



Cross Reference: WOMM-002, FS-21, OMM #2, Breen 2177

Description: *Over Mintmark.*

An S can be seen to the left, in the middle, and below the bottom of the D. The upper left curve is seen to the left of the upright. The center of the S is seen through the middle of the D. The lower bar and serif of the S are seen below the bottom of the D.



Die Markers:

Obverse - Die crack from the rim through the bottom left side of the bust. Die crack through the top of the head.

Reverse - Die scratches through the bottom left wheat stalk and in the bottom center.

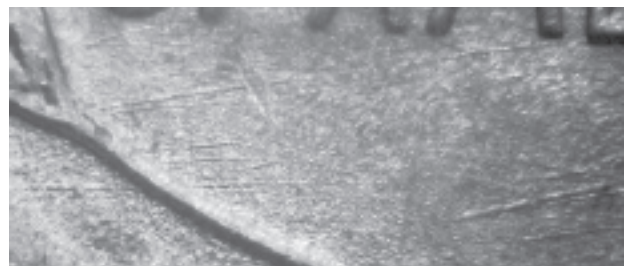
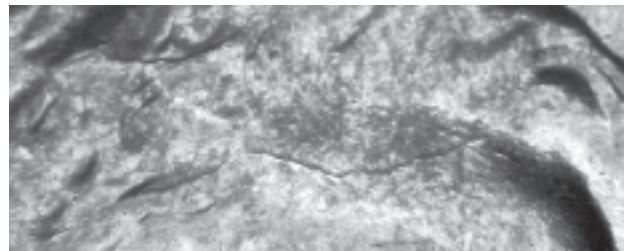


VF XF AU MS60 MS63 MS65RD

Value : 60 100 150 175 300 550

ANACS Pop.: [155] (2) 67RD, (14) 66RD, (24) 65RD

Comments : Not as strong as its 1944D OMM counterpart, but still very rare and in great demand in high grade. For this variety, it would seem that the left portions of the S are much stronger than the right as the serif and the upper left curve of the S are very distinct. This leads to the conclusion that the engraver tried to remove the S first, mainly getting the right side, then struck the D over top.



1946-S/D

OMM-001

Cross Reference : WOMM-001, FS-21.2, OMM #1

Description: *Over Mintmark.*

A D mintmark can be seen under the lower portions of the S. The lower serif of the D is seen below the lower serif of the S. The vertical bar of the D is seen between the lower serif and middle of the S. The top of the D is seen directly above the middle of the S.



Die Markers:

Obverse - Many die scratches above the date in the field, especially two in front of the chin. Many die scratches through the neck and head in front of the ear. Die scratch from the upper left of the T and another from the upper left of the Y of LIBERTY.

Reverse - Many small die scratches between the left wheat stalk, C of CENT, UN of UNITED, and O of OF. Many small die scratches between the right wheat stalk, T of CENT, and ES of STATES.



VF XF AU MS60 MS63 MS65RD

Value : 30 60 90 120 200 450

ANACS Pop.: [84] (2) 67RD, (14) 65RD, (36) 64RD

Comments : This is a difficult variety to find in any grade. There was obviously no attempt to remove the D, as the full, raised outline of the D can be seen beneath the S.

1951-D/S

OMM-001

Cross Reference : WOMM-001, FS-21.5,
OMM #1, Breen 2202

Description: *Over Mintmark.*

The remnants of an S can be seen under the D. The upper left curve of the S can be seen to the left of the vertical bar of the D. The middle of the S is seen through the middle of the D. The lower serif of the S is seen right below the bottom of the D.

Die Markers:

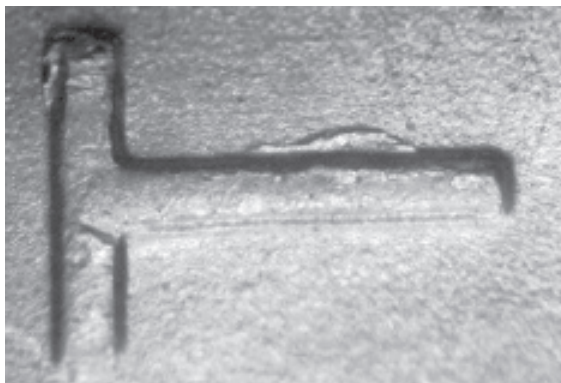
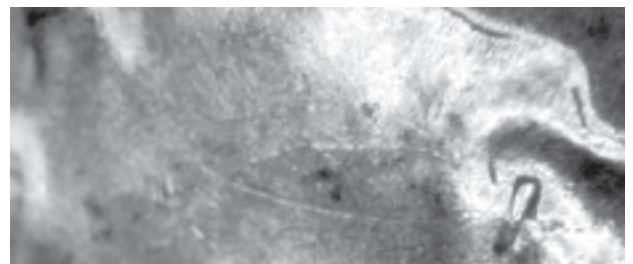
Obverse - Die crack from the bottom left of the bust, going above the V.D.B., and slightly after. Die scratch from the eyelid up through the forehead.

Reverse - Die crack on the right side of the T of CENT.

	VF	XF	AU	MS60	MS63	MS65RD
Value :	8	12	20	30	45	80

ANACS Pop.: [21] (4) 66RD, (9) 65RD, (3) 64RD

Comments : Early die states show a nice bar through the center of the D, late die states do not.



1951-D/S

OMM-002

Cross Reference: WOMM-002, OMM #2

Description: *Over Mintmark.*

The remnants of the bottom of an S can be seen below the bottom of the D.

Die Markers:

Obverse - Die scratch from the field below the base of the bust, going above the V.D.B., back to the field.

Reverse - Die scratch from the T of STATES, down through the M of AMERICA, and down to the left of the wheat stem.

VF XF AU MS60 MS63 MS65RD

Value : 8 12 20 30 45 70

ANACS Pop.: [76] (13) 66RD, (36) 65RD, (24) 64RD

Comments : The only remnants of an S are seen below the D. On early die state coins, the arc of the lower right side of an S can be seen curving over the lower right side of the D. Using overlays, it is conclusive that the first mintmark was an S. Below is a later die state that shows the right bottom of the S more worn.



Cross Reference: WOMM-001, FS-21.6, OMM #1, Breen 2206

Description: *Over Mintmark.*

What is believed to be the lower curve of an S is below the D.

Die Markers:

Obverse - Many small die scratches under the chin and between the nose and chin.

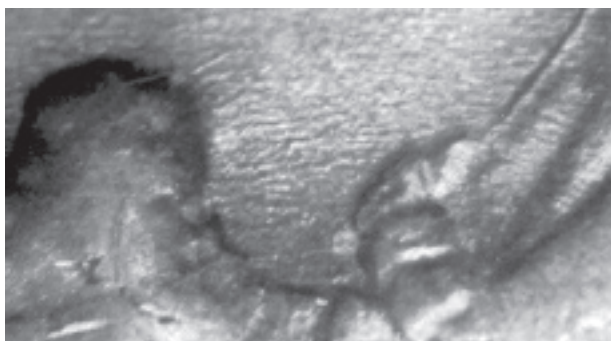
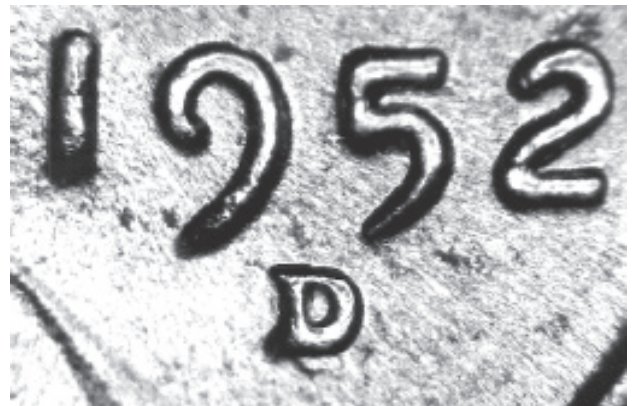
Reverse - None noted.

VF XF AU MS60 MS63 MS65RD

Value : 8 12 25 35 50 80

ANACS Pop.: [19] 66RD, (5) 65RD, (9) 64RD

Comments : There are no remnants of the lower right curve of the S; therefore, it cannot be determined by using overlays if this is the base of an S. The one diagnostic that suggests it is an S is that what looks like the lower serif of the S is curved, not sharp like that of a D. A higher grade early die state is needed to prove or disprove this variety.



1956-D/S

OMM-001

Cross Reference: WOMM-001, RPM #12

Description: *Over Mintmark D/D/S.*

On early and mid-die states, the S cannot be seen. On late die states, the upper left curve is seen touching the top right of the D, with the bottom of the S touching the lower right part of the D. When tilted correctly the complete outline of the S can be seen.

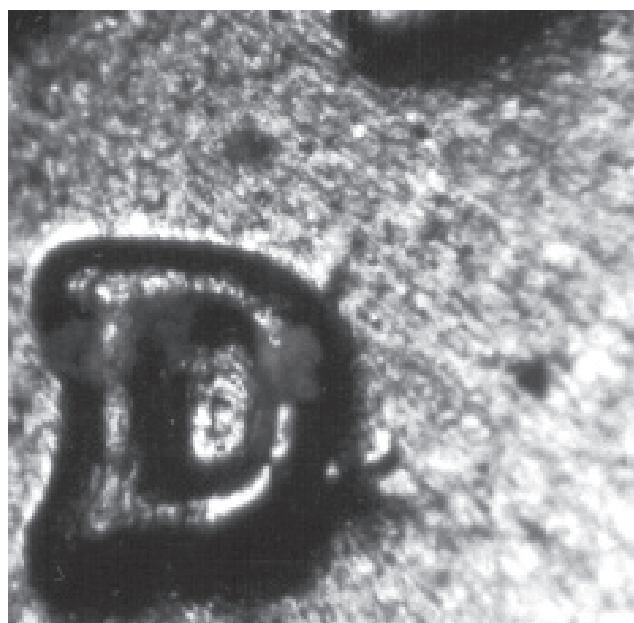
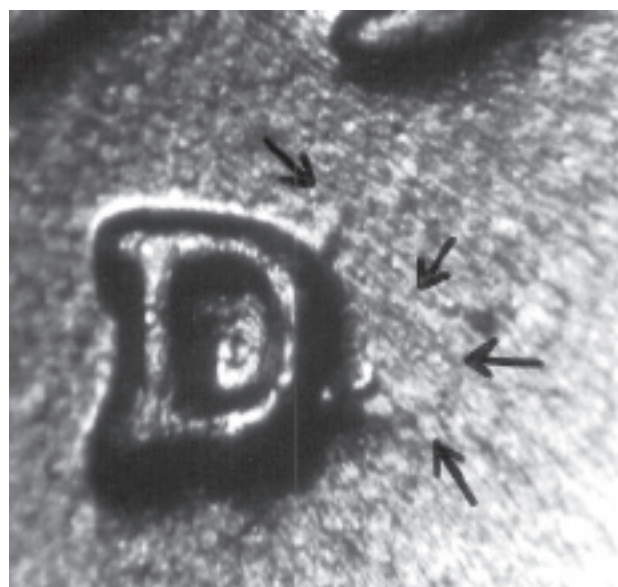
Die Markers:

Obverse - Between lower fold and center of bust, there is a horizontal die crack seen on all three stages. Stage A - Many strong die scratches running southwest to northeast throughout the obverse. Stage B - Die was polished; most of die scratches removed. Die scratch southwest from lower G of GOD. Stage C - Shows S mintmark clearly; die scratches in area of date are gone.

Reverse - None noted.

	VF	XF	AU	MS60	MS63	MS65RD
Value :	10	15	25	35	50	125
ANACS Pop.:	[66]	(14)	66RD,	(26)	65RD	

Comments : This variety is listed by CONECA as RPM #12. Many have been found since this coin was first discovered.



Cross Reference: WDMM-001

Description: *Over Mintmark D/S.*

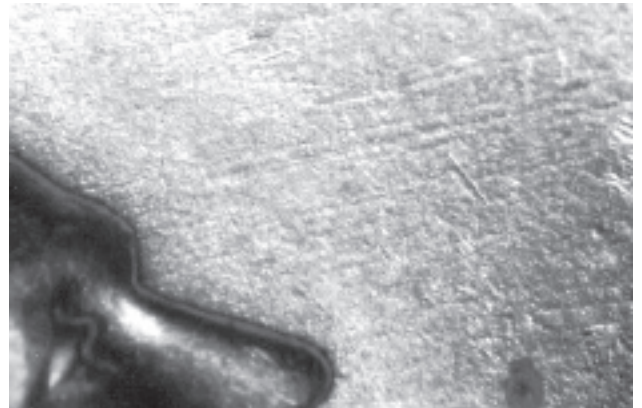
An S mintmark is seen to the left of the tail of the 9 in the date. The bottom and middle bars are seen clearly, and if you tilt the coin right, you can see the upper curve, upper bar, and serif of the S, making it absolutely 100% verified as an S.



Die Markers:

Obverse - Small die scratch from the front of the forehead to the hair above.

Reverse - Die scratch from the right leg of the N of CENT down through the first S of STATES. Many die scratches to the left of the C of CENTS.

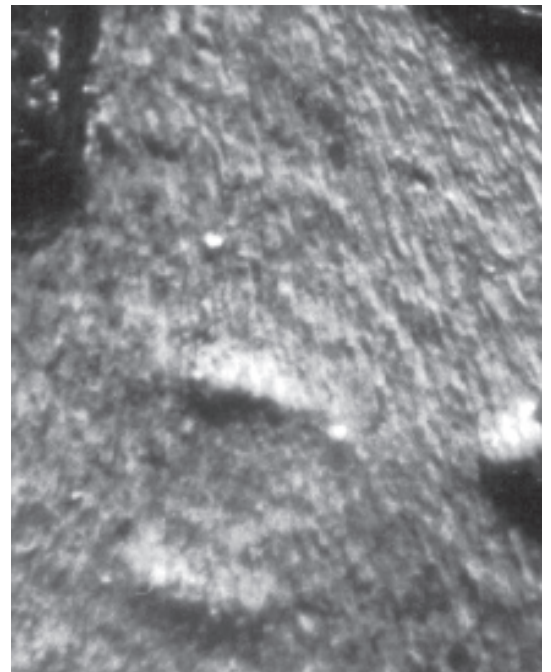


VF XF AU MS60 MS63 MS65RD

Value : 20 35 50 65 100 250

ANACS Pop.: [177] (35) 66RD, (87) 65RD, (45) 64RD

Comments : First reported in 1997, many have been found since. Some OMMs are difficult to confirm because there is too little of the mintmark remaining. This variety is nice as the entire outline is seen. The question still exists of why a mintmark would be punched to the left of the 9.



1980-D/S

OMM-001

Cross Reference: WDMM-001, OMM #1, FS-34.1

Description: *Over Mintmark D/S.*

The complete outline of an S mintmark is seen northeast of the D.

Die Markers:

Obverse - Many small die scratches through the date and below. Many small die scratches in the field behind the head.

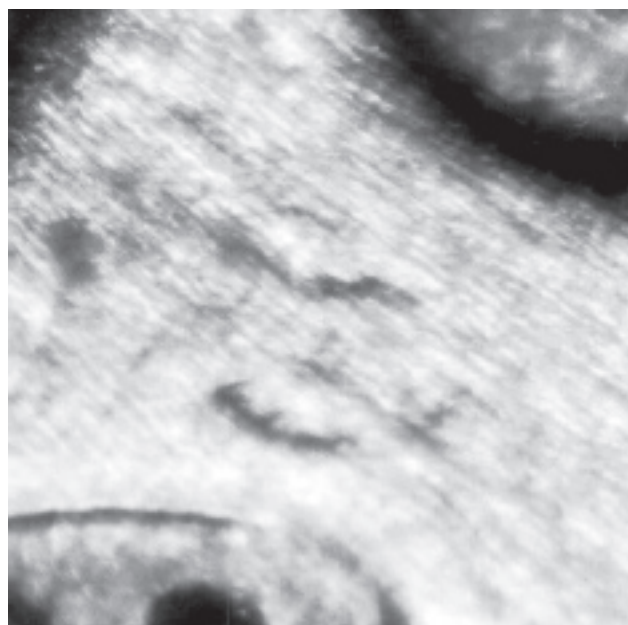
Reverse - Die scratched from the T to the E of UNITED. Die scratches from the E to the S of STATES.

VF XF AU MS60 MS63 MS65RD

Value : 20 40 70 80 100 200

ANACS Pop.: [25] 65RD, 64RD, (4) 64RB

Comments : In Wexler and Miller's RPM Book, there are six OMMs listed for 1980D Lincoln cents. Of these, only OMM #1 has been certified by ANACS with 23 uncirculated specimens slabbed. OMM #1 and OMM #2 are the only two varieties that show a clear outline of an S. Specimens of the other listed varieties are needed to study further. What is unusual about all of these varieties is that they are high and close or part of the digit of the date. Therefore, they would not have normally been struck in this location. S mintmarks were only used for proof coinage for coins struck at the San Francisco Mint in 1980. The only logical conclusion is the S mintmark was purposefully struck in the die by a mint employee wanting to create a die variety or for another reason.



1981-D/S

OMM-001

Cross Reference: WDMM-001, OMM #2

Description: *Over Mintmark D/S.*

Most of the outline of an S mintmark is seen north of the D.

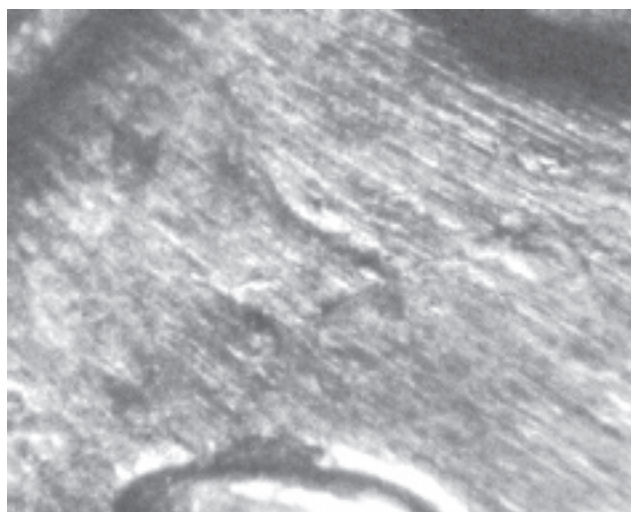
Die Markers:

Obverse - None noted.

Reverse - None noted.

	VF	XF	AU	MS60	MS63	MS65RD
Value :	20	40	65	70	85	150
ANACS Pop.:	[0]					

Comments : In Wexler and Miller's RPM book, there are four OMMs listed for 1981D Lincoln cents. None have been certified by ANACS or seen in auctions. Specimens of the other listed varieties are needed to study further. As with the 1980D OMM-001, the S mintmarks are punched very high and close to the date; one strong possibility is that they were punched into the dies by a Mint employee attempting to "leave their mark".



***BUFFALO NICKEL
OVER MINTMARKS***

Cross Reference: WOMM-001, FS-19.8

Description: *Over Mintmark D/D/S.*

Repunched D over S mintmark. The diagonal bar of an S is seen through the middle of the D. A small portion of the upper left side of the S is seen to the left of the D below the top serif. A second D is seen above the top of the D.

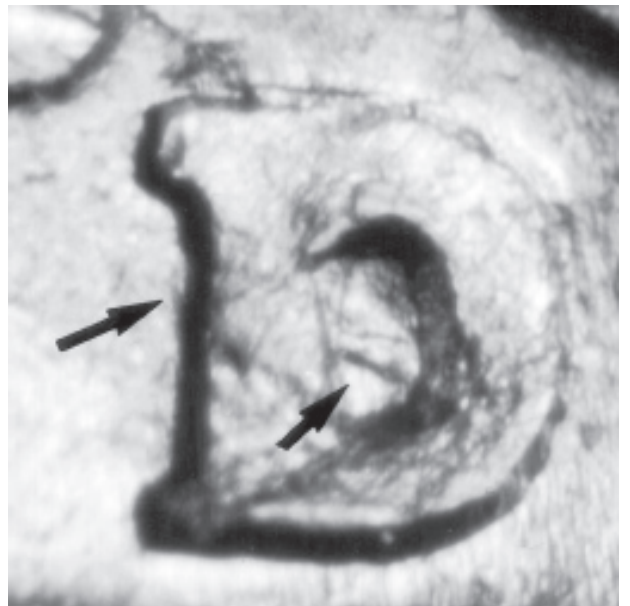
Die Markers:

Obverse - Several parallel die scratches above the date.

Reverse - Die scratch from the rim to the top of the U of UNITED.

	XF	AU	MS60	MS63	MS64	MS65
Value :	17	25	35	60	150	---
ANACS Pop.:	[6]	(3)	64, 63, 62			

Comments : This OMM needs further study. The curve within the D does not match the curve of another D. Could it possibly be a die scratch?



1938-D/S

OMM-001

Cross Reference: WOMM-001, OMM #1

Description: *Over Mintmark D/D/S.*

Repunched D over S mintmark. The top of the S is seen above the D. The left curve is seen below the top serif of the D. The diagonal bar of the S is seen through the middle of the D. The top of the bottom bar of the S is seen above the bottom of the D. Two repunched Ds south seen below the bottom and bottom right.



Die Markers:

Obverse - None noted.

Reverse - None noted.

	XF	AU	MS60	MS63	MS64	MS65
Value :	10	18	25	50	70	90
ANACS Pop.:	[192]	(4)	66,	(60)	65,	(93) 64, (23) 63

Comments : The usual D/S variety offered in price lists, although OMM-002 is sometimes sold as the D over S. When it was discovered in 1962, it was considered to be a great rarity. This variety is easily distinguishable from the other five 1938-D OMMs because it is the only one that shows the top of an S above the top of the D. Late die states do not show the repunched D below the bottom of the D.



Cross Reference: WOMM-002, OMM #2

Description: *Over Mintmark D/S.*

The diagonal bar of the S is seen through the middle of the D. The top left curve of the S is seen below the top serif of the D.

Die Markers:

Obverse - None noted.

Reverse - None noted.

	XF	AU	MS60	MS63	MS64	MS65
Value :	8	12	18	30	40	50
ANACS Pop.:	[99]	(6)	66,	(50)	65,	(25) 64

Comments : Nearly as desirable as OMM-001, it shows the underlying curve very clearly. The diagonal bar of the S in the middle of the D is stronger than that on OMM-001. It is also in the same relative location as OMM-001; this is why these two varieties are sometimes confused. Why are there such strong remnants of the S in the middle of the D, and none seen on the outside of the D?



1938-D/S

OMM-003

Cross Reference: WOMM-003, OMM #3

Description: *Over Mintmark D/S.*

Repunched D over S mintmark. The diagonal bar of the S is seen through the middle of the D. The bottom of the S is seen below the D.

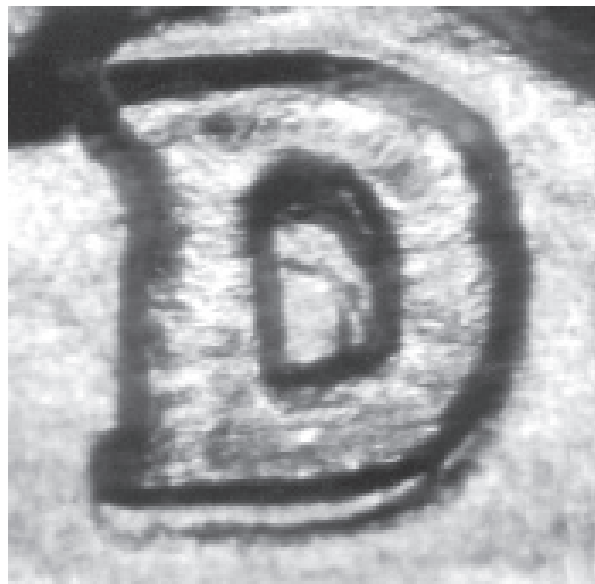
Die Markers:

Obverse - None noted.

Reverse - None noted.

	XF	AU	MS60	MS63	MS64	MS65
Value :	8	12	18	30	40	50
ANACS Pop.:	[72]	66,	(28)	65,	(34)	64, (4) 63

Comments : This variety also is a doubled die reverse listed as WDDR-001. Please refer to the doubled die chapter to see photos of the doubling. The remnants of the S are very light, but the shape and contour of the metal inside the D lead to the conclusion that this is an S.



1938-D/S

OMM-004

Cross Reference: WOMM-004, OMM #4

Description: *Over Mintmark D/D/D/S.*

Repunched D over S mintmark. The diagonal bar of the S is seen through the middle of the D. Two extra serifs are seen on the bottom serif of the D.

Die Markers:

Obverse - None noted.

Reverse - None noted.



	XF	AU	MS60	MS63	MS64	MS65
Value :	8	12	18	30	40	50
ANACS Pop.:	[186]	(21)	66,	(91)	65,	(55) 64

Comments : The size of the D used here seems much smaller than the D on the other 38-D OMMs. There is much less space inside the D, showing less of the diagonal bar of the S.



1938-D/S

OMM-005

Cross Reference: WOMM-005, OMM #5

Description: *Over Mintmark D/S.*

Repunched D over S mintmark wide southeast. The diagonal bar of the S is seen protruding out the bottom right side of the D.

Die Markers:

Obverse - None noted.

Reverse - None noted.

	XF	AU	MS60	MS63	MS64	MS65
Value :	8	12	25	40	50	65
ANACS Pop.:	[43]	(31)	65	(10)	65	(2) 64

Comments : This OMM is rarer than the first four 1938-D OMMs. It is harder to find as the S is not centered under the D as are the first four OMMs and is in a location that people would not normally look for an S.



1938-D/S

OMM-006

Cross Reference: WOMM-006

Description: *Over Mintmark D/S.*

Repunched D over S mintmark. The diagonal bar of the S is seen through the middle of the D. The bottom of an S is seen below the bottom of the D.

Die Markers:

Obverse - None noted.

Reverse - None noted.

	XF	AU	MS60	MS63	MS64	MS65
Value :	10	18	30	60	90	140
ANACS Pop.:	[0]					

Comments : Only one of these OMMs has been found to date. With so many collectors looking for the first five OMMs, how was this one missed for so long? The bottom serif is very bold; the lower right curve of the S is obvious. There is no mistaking that this is an S. The higher price than the 1938-D OMM-001 is based on the rarity.



***JEFFERSON NICKEL
OVER MINTMARKS***

Cross Reference: WOMM-001, OMM #1

Description: *Over Mintmark D/S.*

The top left serif of a D is seen below the upper serif of the P. The right curve of the D is seen below the right side of the P.

Die Markers:

Obverse - None noted.

Reverse - None noted.

	XF	AU	MS60	MS63	MS64	MS65
Value :	60	90	125	225	300	500
ANACS Pop.:	[0]					

Comments : Listed in Wexler and Miller's RPM book as OMM #1 on page 286. If the right side of the D was not present, the upper repunched serif would simply look like a repunched P. The length and curvature of the right side of the D follow those of a D and not a P, which would have a greater curve. Extremely rare. A drawing was used to show where to look for the D mintmark.



1949-D/S

OMM-001

Cross Reference: WOMM-001, OMM #1, FS-32

Description: *Over Mintmark D/S.*

The top bar and upper serif are seen above the top of the D. The upper left curve is seen to the left of the D. The center bar of the S is seen through the middle of the D.

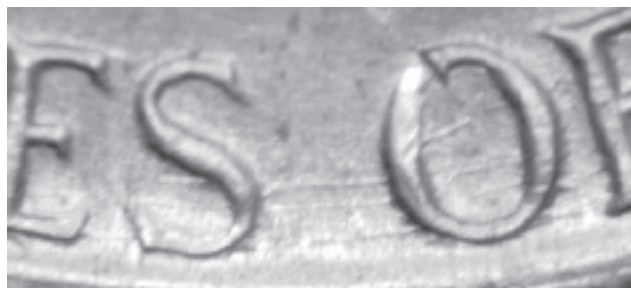
Die Markers:

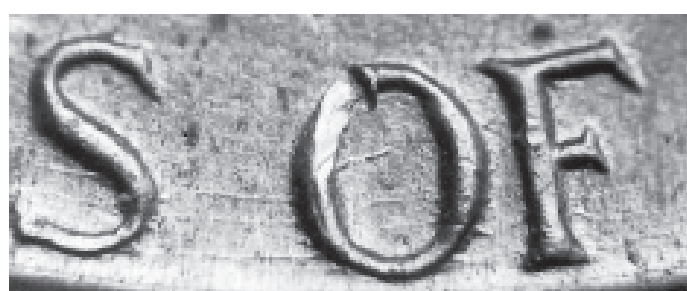
Obverse - Doubling seen on TRUST, especially on the upper serifs of S and Ts of TRUST. Die scratches through the top of IN. Die scratch from the top of the G of GOD.

Reverse - Several parallel die scratches from the S of STATES to the O of OF. Several die scratches through the bottom of UNITED.

	XF	AU	MS60	MS63	MS64	MS65	
Value :	50	80	125	225	300	450	
ANACS Pop.:	[82]	(4)	66,	(41)	65,	(32)	64

Comments : Besides being a nice OMM, this reverse is also paired with a doubled die obverse. ANACS has certified 82 uncirculated specimens.





1954-S/D

OMM-001

Cross Reference: WOMM-001, OMM #1, FS-33

Stage B

Description: *Over Mintmark S/D.*

The bottom of the D and the serif of the D are seen below the bottom of the S.

Die Markers:

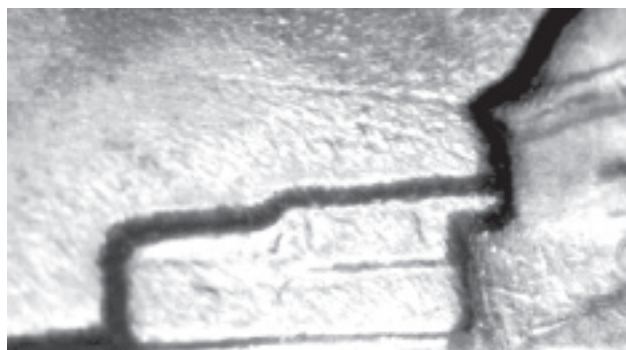
Obverse - None noted.

Reverse - Stage A - Many die scratches through STATES OF. Several die scratches through FIVE CENTS, MONTICELLO, and E PLURIBUS UNUM. Many die scratches above the left and right sides of the building. Nice die scratch from the E of FIVE to below the C of CENTS. Stage B - Small die scratch above the left roof.

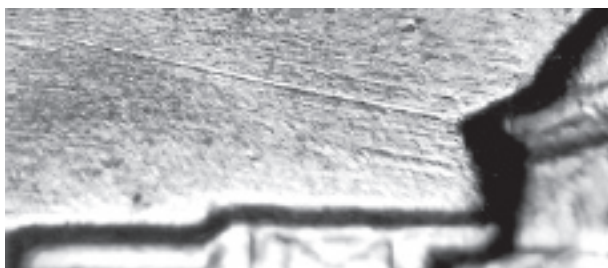


	XF	AU	MS60	MS63	MS64	MS65
Value :	10	18	25	40	50	70
ANACS Pop.:	[220]	(3)	66,	(71)	65,	(115) 64

Comments : This variety has been known for years and is common in circulated and uncirculated grades. In interesting question is why Die Stage A has so many die scratches that Die Stage B does not.



1954S/D OMM-001 continued
Stage A



1955-D/S

Cross Reference: WOMM-001, OMM #1, FS-34

Description: *Over Mintmark D/S.*

The top of the S is seen above the top of the D. The upper left curve is seen to the left of the D below the upper serif. The middle of the S is seen in the middle of the D.

Die Markers:

Obverse - None noted.

Reverse - Several die scratches above the upper and lower left roofs. Die scratch from the left corner of the upper left roof downward at about a 30 degree angle. Several die scratches through the U of UNUM. Two long die scratches from the L of PLURIBUS. Die scratch from the M to the O in MONTICELLO.

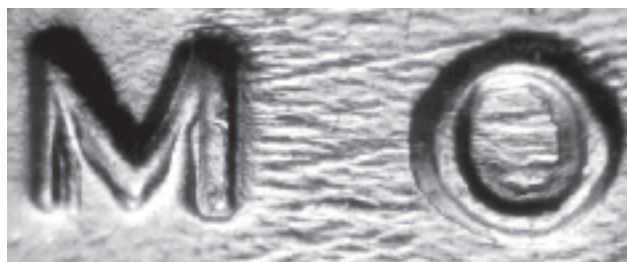
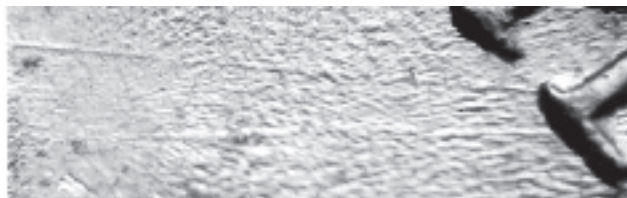
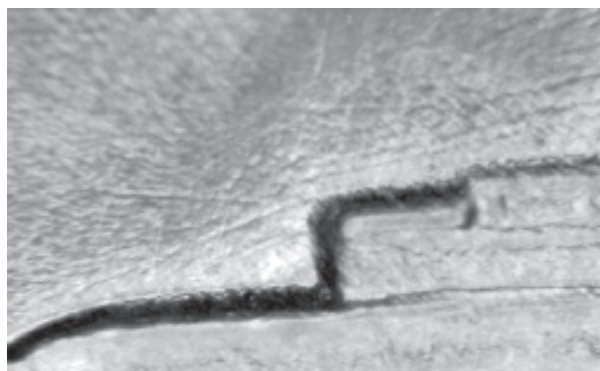
XF AU MS60 MS63 MS64 MS65

Value : 8 12 20 35 50 65

ANACS Pop.: [32] 66, (11) 65, (3) 64

Comments : There are 14 different 1955D/S varieties; this is the boldest and the variety commonly sought after. The 1955D OMM-001 is the only 55D OMM variety listed in the Red book.

OMM-001



1955-D/S

OMM-002

Cross Reference: WOMM-002, OMM #2

Description: *Over Mintmark D/S.*

The top of the S is seen above the D. A small portion of the upper left curve of the S is seen to the left of the D below the upper serif of the D. The middle of the S is seen running through the middle of the D.

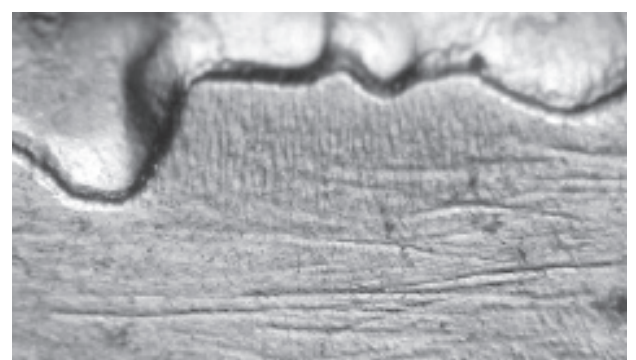
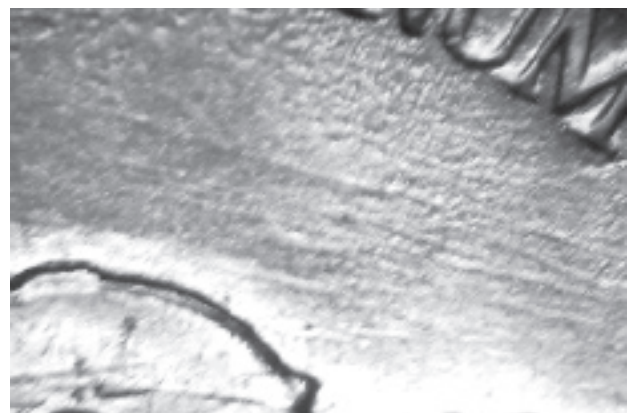
Die Markers:

Obverse - Many vertical die scratches in front of the face.

Reverse - Many die scratches seen between the left side of Monticello and E PLURIB. Many die scratches seen between the top right side of Monticello and UNUM.

	XF	AU	MS60	MS63	MS64	MS65
Value :	6	10	15	20	25	35
ANACS Pop.:	[8]	65,	(5)	64,	(2)	63

Comments : With many RPMs and OMMs, the relative distance between the devices and mintmark can be used to distinguish the varieties. All of the D mintmarks are in the same relative location, making this difficult.



1955-D/S

Cross Reference: WOMM-003, OMM #3

Description: *Over Mintmark D/S.*

The top of the S is seen above the top of the D. A small portion of the upper left curve of the S is seen to the left of the D below the upper serif of the D.

The bottom of the S is seen below the bottom of the D.

Die Markers:

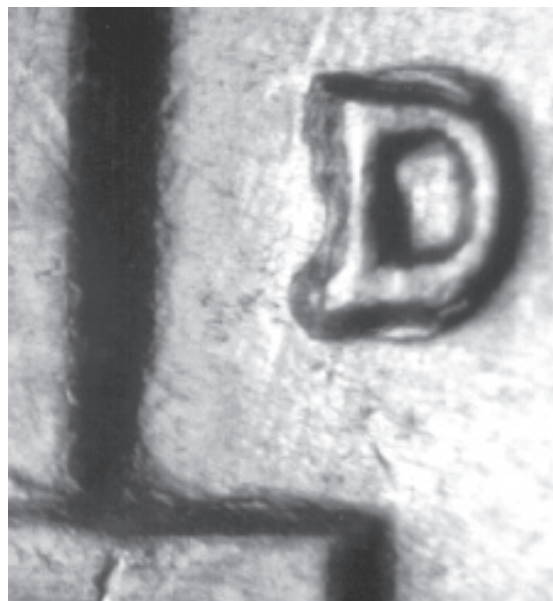
Obverse - Die scratches through the top and above IN GOD WE TRUST.

Reverse - Doubling seen on the bottom of the letters of AMERICA. Die scratch through the middle of the D of UNITED. Several die scratches between the D of UNITED and the S of STATES. Die scratches from the bottom of the M of UNUM.

	XF	AU	MS60	MS63	MS64	MS65
Value :	6	10	15	20	25	30
ANACS Pop.:	[69]	(16)	65,	(42)	64,	(11) 63

Comments : Putting together a full set of the 55D OMMs is a fun challenge. In addition, you might discover a new variety in your search.

OMM-003



1955-D/S

OMM-004

Cross Reference: WOMM-004, OMM #4

Description: *Over Mintmark D/S.*

The top bar and upper serif of the S are seen above the top of the D. The upper left curve of the S is seen to the left of the upper D. The bottom of the S is seen below the bottom of the D.

Die Markers:

Obverse - Several die scratches between IN GOD WE TRUST and Jefferson's front profile.

Reverse - Horizontal die scratch seen below the D mintmark. Several 45 degree die scratches seen below E PLU of PLURIBUS. Die scratch from the bottom bar of the E to the middle of the P of PLURIBUS.

	XF	AU	MS60	MS63	MS64	MS65
Value :	6	10	15	20	25	30
ANACS Pop.:	[13]	(10)	5,	(2)	64,	63

Comments : One of the goals of this book was to show as many die markers as possible to make identification simple. This is especially important for the 55D OMMs as there are so many that look similar.



1955-D/S

Cross Reference: WOMM-005, OMM #5

Description: *Over Mintmark D/S.*

The top of the S is seen above the top of the D. A small portion of the upper left curve of the S is seen to the left of the D below the upper serif of the D.

Die Markers:

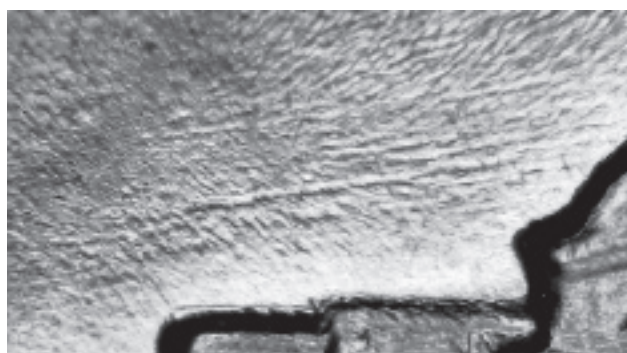
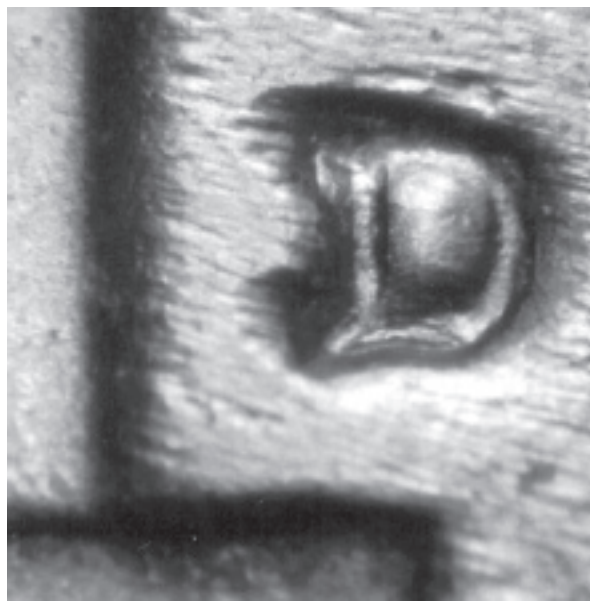
Obverse - Die scratch from the back of the neck to the ribbon below.

Reverse - Long horizontal die scratch seen above the left side of MONTICELLO. Long die scratch to the E of FIVE. Several die scratches through the IV of FIVE. Two die scratches from the bottom left leg of MONTICELLO. Vertical die scratch to the left of E of EPU.

	XF	AU	MS60	MS63	MS64	MS65
Value :	6	10	15	20	25	30
ANACS Pop.:	[7]	(5)	65,	(2)	64	

Comments : Very similar to OMM-001; not as strong on the center bar.

OMM-005



1955-D/S

OMM-006

Cross Reference: WOMM-006, OMM #6

Description: *Over Mintmark D/S.*

The top of the S is seen above the top of the D. A small portion of the upper left curve of the S is seen to the left of the D below the upper serif of the D. The middle of the S is seen through the middle of the D.

Die Markers:

Obverse - None noted.

Reverse - None noted.



	XF	AU	MS60	MS63	MS64	MS65
Value :	6	10	15	20	25	35
ANACS Pop.:	[0]					

Comments : This is one of the rarer 55D OMMs.

There are no OMM-006 varieties certified by ANACS. ANACS has certified one of each of the other 55D OMMs listed in the Wexler and Miller RPM book.

1955-D/S

OMM-007

Cross Reference: WOMM-007, OMM #7

Description: *Over Mintmark D/S.*

The top of the S is seen above the top of the D. A small portion of the upper left curve of the S is seen to the left of the upper serif of the D. The middle of the S is seen through the middle of the D.

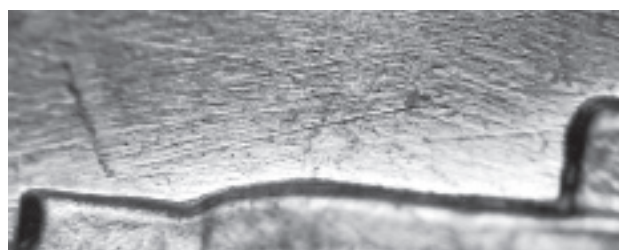
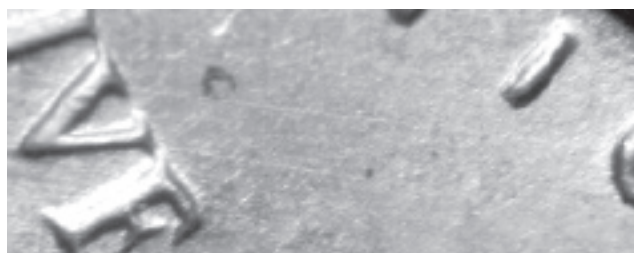
Die Markers:

Obverse - Many die scratches in front of the face and through TRUST. Die scratches behind the jacket below the ribbon.

Reverse - Die scratch from the bottom of the I of FIVE through the top left side of the V to the C of MONTICELLO. Die scratch through the EN of CENT to the M of AMERICA. Die scratches seen above the left and right sides of the building.

	XF	AU	MS60	MS63	MS64	MS65
Value :	6	10	15	20	25	30
ANACS Pop.:	[5] (2) 65, 64, (2) 63					

Comments : Since Wexler and Miller's RPM book was published in 1983, four new OMMs have been found for the 1955D.



1955-D/S

OMM-008

Cross Reference: WOMM-008, OMM #8

Description: *Over Mintmark D/S.*

The top of the S is seen above the top of the D. A small portion of the upper left curve of the S is seen to the left of the D below the upper serif of the D. The middle of the S is seen through the middle of the D.

Die Markers:

Obverse - Die scratch from the front of the jacket through the middle of IN to the G of GOD.

Reverse - Two parallel die scratches from the left side of the second A of AMERICA.

	XF	AU	MS60	MS63	MS64	MS65
Value :	6	10	15	20	25	30
ANACS Pop.:	[7]	(2)	65,	(4)	64,	63

Comments : When purchasing an attributed 1955D OMM, be sure to verify the correct variety as mistakes are sometimes made on these varieties.



1955-D/S

OMM-009

Cross Reference: OMM #9

Description: *Over Mintmark D/S.*

The middle of the S is seen through the middle of the D.

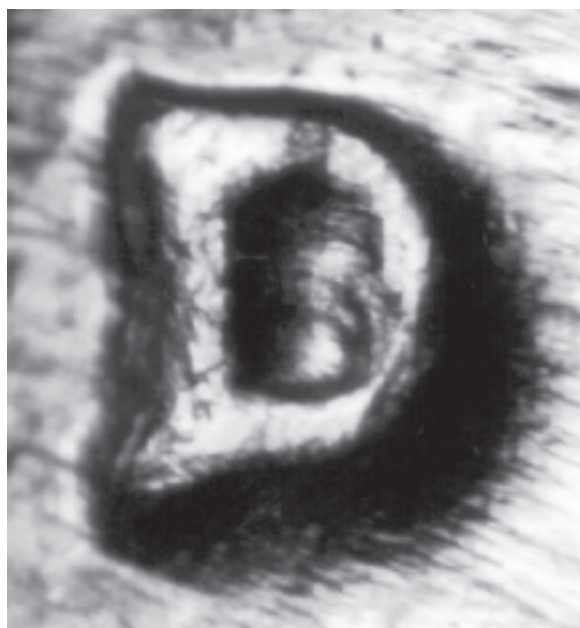
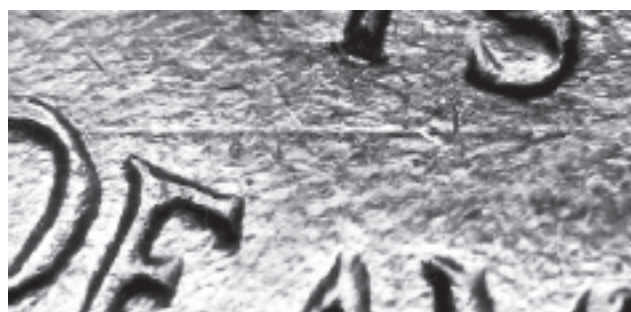
Die Markers:

Obverse - None noted.

Reverse - Die scratch from the O of OF up to under the S of CENTS.

	XF	AU	MS60	MS63	MS64	MS65
Value :	6	10	15	20	25	30
ANACS Pop.:	[2]	(2)	64			

Comments : This variety has the strongest cross bar of the 55D OMMs, but surprisingly the S is not seen to the left or above the D. The unique die markers shown for each variety make it simpler to identify the variety by checking the die markers first. It should be noted that in the ANACS population report, 950 coins were certified as 1955D/S without a die number.



1955-D/S

Cross Reference: WOMM-010, OMM #10

Description: *Over Mintmark D/S.*

The upper serif of the S is seen above the right side of the top of the D. The upper left curve of the S is seen to the left of the D below the upper serif of the D. The middle of the S is seen through the middle of the D. The bottom of the S is seen below the bottom of the D.

Die Markers:

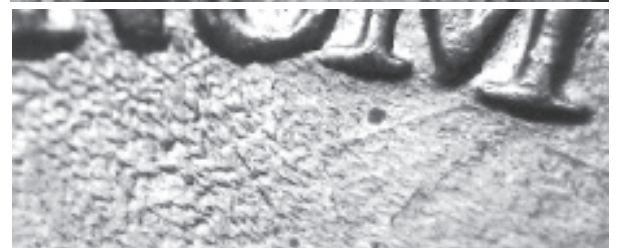
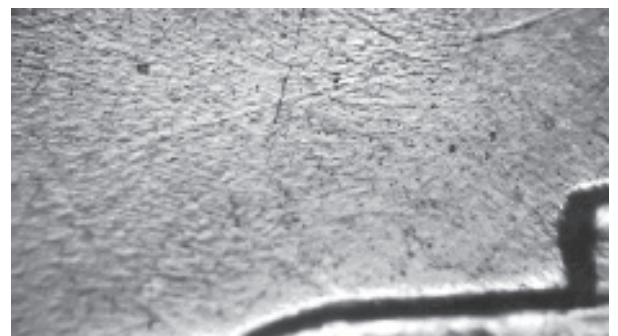
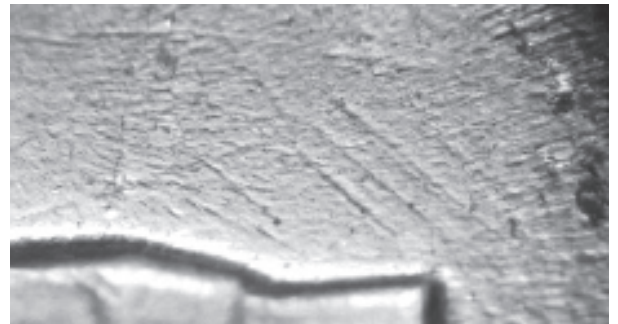
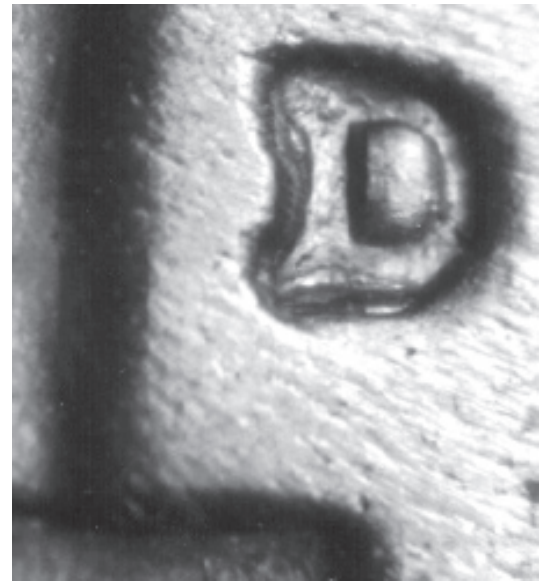
Obverse - None noted.

Reverse - Three parallel die scratches above the right side of MONTICELLO. Several die scratches above the right side of the roof. Die scratches from the S of CENTS. Die scratch from the M of UNUM. Die gouge below the right side of the roof.

	XF	AU	MS60	MS63	MS64	MS65
Value :	6	10	15	20	25	30
ANACS Pop.:	[9]	(5)	65,	(4)	64	

Comments : Probably the weakest of the 55D OMMs.

OMM-010



1955-D/S

OMM-011

Cross Reference: WOMM-009

Description: *Over Mintmark D/S.*

The middle of the S is seen through the middle of the D. A small portion of the upper curve of the S is seen below the top serif.

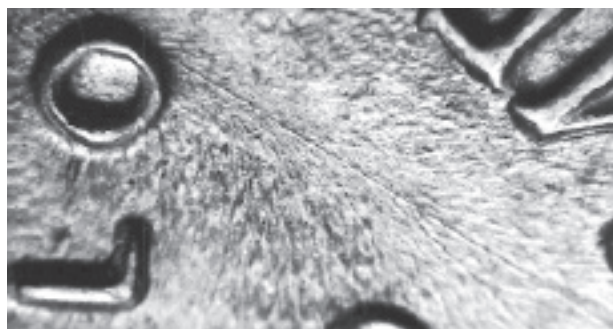
Die Markers:

Obverse - Die scratch from the I of IN into the field.

Reverse - Die scratch from the first A of AMERICA to the O of MONTICELLO. Die scratch from the I of FIVE down towards the rim. Die scratches north from the top of the roof. Die scratches from the F of OF. Die scratches from UM of UNUM.

	XF	AU	MS60	MS63	MS64	MS65
Value :	6	10	15	20	25	30

Comments : This is a new OMM which was recently discovered and not previously shown.



Cross Reference: WOMM-011

Description: *Over Mintmark D/S.*

The middle of the S is seen through the middle of the D. A small portion of the upper curve of the S is seen below the top serif. Part of the bottom of the S is seen below the bottom of the D.

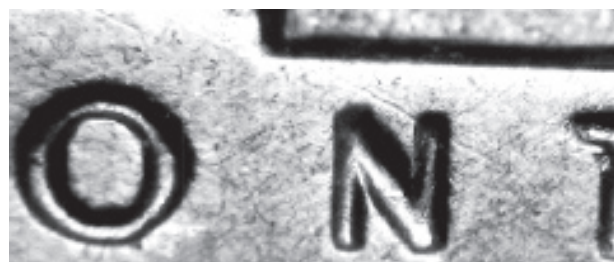
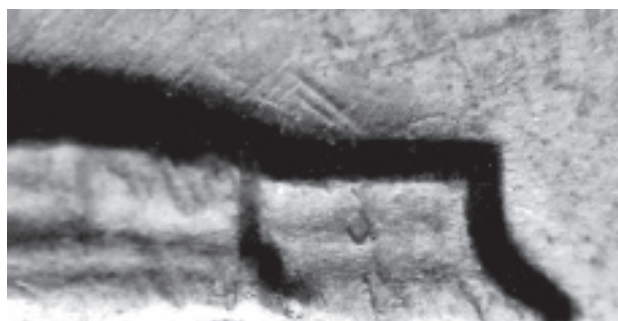
Die Markers:

Obverse - Several die scratches through LIBERTY.

Reverse - Doubling seen on the bottom of AMERICA. Many small die scratches through FIVE. Long die scratch from the R of PLURIBUS southwest. Die scratch from the base below the D mintmark to the rim. Several die scratches above the right side of the roof. Die scratch through the top right of the N of MONTICELLO.

	XF	AU	MS60	MS63	MS64	MS65
Value :	6	10	15	20	25	30

Comments : From the number of 1955 Jefferson nickel dies that were prepared with an S mintmark, it is obvious that the Philadelphia Mint expected the nickels to be struck in San Francisco in 1955. After it was decided not to strike Jeffersons at San Francisco, a decision was made to reuse the dies for Denver. A majority of the OMMs known are from years in which a number of dies prepared for one mint were reused after it was decided not to strike that series at that Mint.





1955-D/S

OMM-013

Cross Reference: None

Description: *Over Mintmark D/S.*

The top of an S is seen directly above the top of the D. The center of the S is seen through the center of the D.

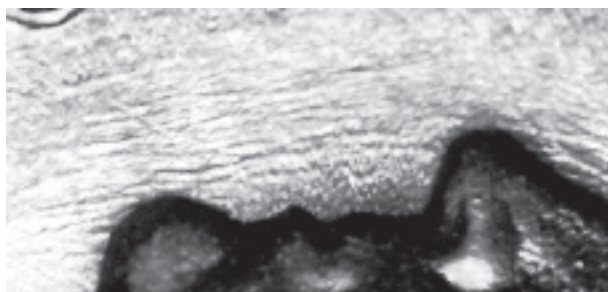
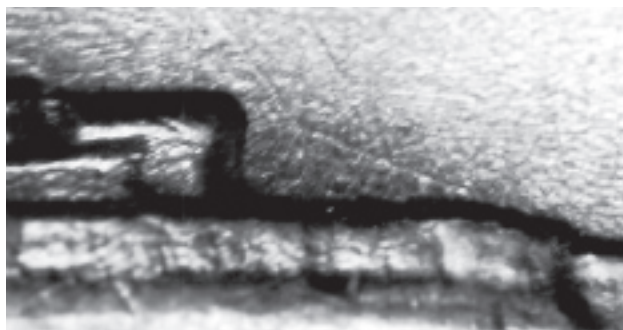
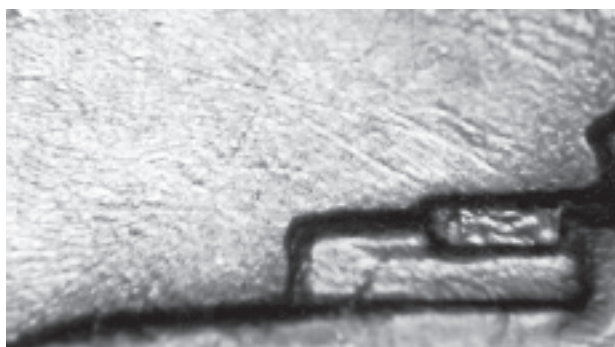
Die Markers:

Obverse - Die scratches in the field in front of the face.

Reverse - Several die scratches above the left side of the building.

	XF	AU	MS60	MS63	MS64	MS65
Value :	6	10	15	20	25	30

Comments : Another new OMM recently discovered and not previously shown.



1955-D/S

Cross Reference: None

Description: *Over Mintmark D/S.*

The top curve of the S is seen below the serif. The center of the S is seen through the center of the D.

Die Markers:

Obverse - Die scratches in the field in front of the chin.

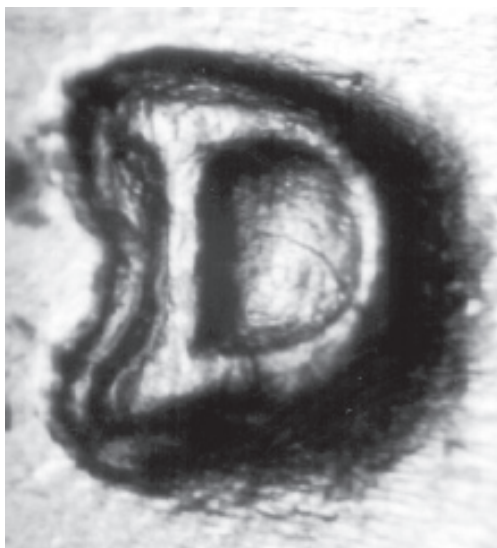
Reverse - Die scratch from the top left of the F of OF. Die scratch below the S of CENTS. Die scratch from the top left of the M of AMERICA. Die scratch through the bottom of the E of MONTICELLO. Die scratch into the bottom of the O of MONTICELLO.

XF AU MS60 MS63 MS64 MS65

Value : 6 10 15 20 25 35

Comments : A new OMM recently discovered and not previously shown. Many of these varieties look extremely similar. Die markers are essential in telling the difference.

OMM-014



***ROOSEVELT DIME
OVER MINTMARKS***

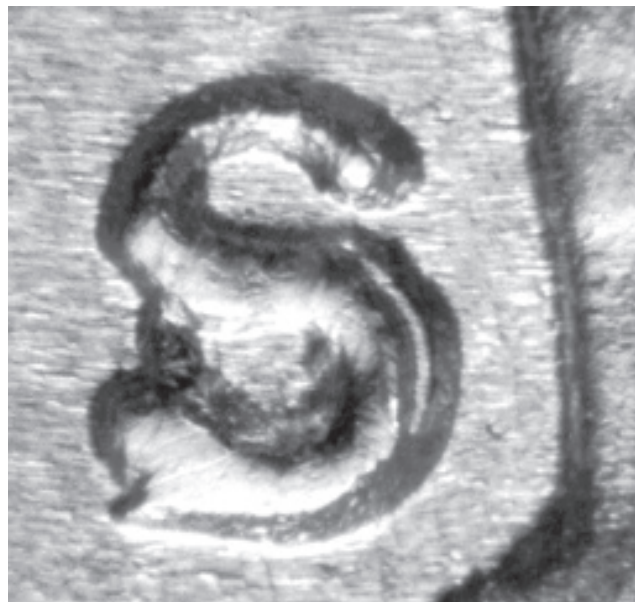
1947S/D

OMM-001

Cross Reference: WOMM-001, FS-013, OMM #1, RPM #1

Description: *Over Mintmark S/D.*

Repunched S over D mintmark. The vertical bar of the D is seen between the middle of the S and the lower serif of the S. The bottom serif of the D is seen below the bottom S serif. The bottom of the D is seen right below the bottom of the S. The right side of the D is seen to the right of the lower right curve.



Die Markers:

Obverse - Small die scratches through IN GOD WE TRUST, especially above IN. Three strong perpendicular die scratches through the LI of LIBERTY.

Reverse - Many long die scratches through the left side branches and EPU. Several heavy die scratches through ICA of AMERICA.



	VF	XF	AU	MS60	MS63	MS65
Value :	10	20	60	100	200	350
ANACS Pop.:	[46]	(13)	65,	(12)	64,	(9) 64

Comments : This was first listed as RPM #1 in John Wexler and Tom Miller's RPM book. The lower serif of the D on this OMM and OMM-002 is seen clearly below the serif of the S. This helped verify this as a D mintmark. ANACS has certified 38 of this variety in grades of MS60 and above.



Cross Reference: WOMM-002, FS-012, OMM #2

Description: *Over Mintmark S/D.*

Repunched S over D mintmark. The vertical bar of the D is seen between the middle and lower serif of the S. The bottom serif of the D is seen below the lower serif of the S. The right side of the D is seen to the right of the lower S up to the bottom of the upper serif. The top of the D is seen in the middle of the upper loop of the S.



Die Markers:

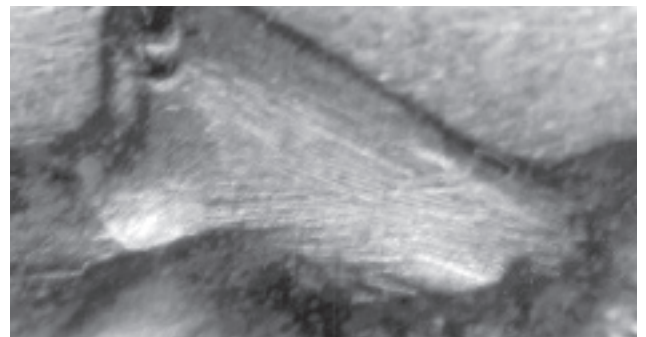
Obverse - Many vertical die scratches through IN GOD WE TRUST. Many die scratches through the field in front of the face and RTY of LIBERTY. Die scratches on the nose and the forehead.

Reverse - Many small die scratches through ONE and the branches on the lower left side. Die scratches through the branches on the right side. Strong die scratches through ICA of AMERICA.



	VF	XF	AU	MS60	MS63	MS65
Value :	10	20	50	90	180	300
ANACS Pop.:	[63]	67,	66,	(18)	65,	(18)
					64	

Comments : The D mintmark in this OMM is relatively smaller in height than OMM-001. The bottom of both Ds starts at the bottom of both Ss. The top of the D in this OMM goes to the bottom of the upper serif of the S. This clearly looks like two different size Ds. ANACS has certified 63 of this variety in grades of MS60 and above.



1950S/D

OMM-001

Cross Reference: WOMM-001, FS-014.5, OMM #1

Description: *Over Mintmark S/D.*

Repunched S over D mintmark. The vertical bar of the D is seen between the middle and lower serif of the S. The right side of the D is seen to the right of the lower S up to the bottom of the upper serif. The top of the D is seen in the middle of the upper loop of the S.



Die Markers:

Obverse - None noted.

Reverse - None noted.

	VF	XF	AU	MS60	MS63	MS65			
Value :	10	20	65	120	240	400			
ANACS Pop.:	[25]	(2)	66,	(5)	65,	(6)	64,	(11)	63

Comments : Usually comes with a weaker strike than the two 47 OMMs. The lower serif of the D is not visible. This variety is harder to find than the 47 OMMs. ANACS has certified 25 of this variety in grades of MS60 and above.

***WASHINGTON QUARTER
OVER MINTMARKS***

1950-D/S

OMM-001

Cross Reference: WOMM-001, OMM #1, FS-21, Breen 4354

Description: *Over Mintmark D/S.*

The top of the S is seen directly above the top of the D. The upper left curve of the S is seen to the left of the upper serif of the D extending down to the middle of the left of the D.

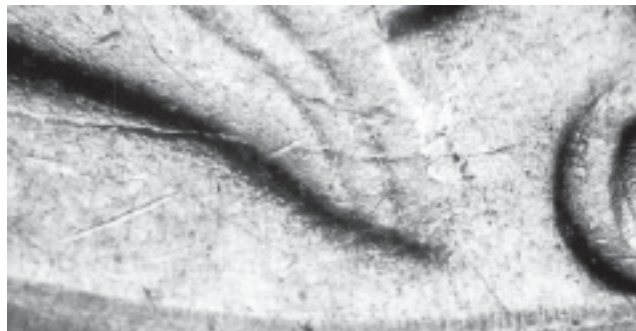
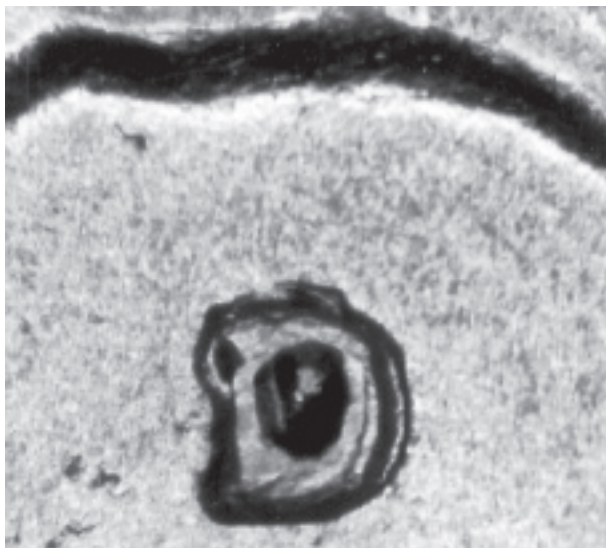
Die Markers:

Obverse - Die crack from the base of the neck through the ribbons on the right.

Reverse - Die crack from the Q of QUARTER extending upward through the left wing, then into the field.

	VF	XF	AU	MS60	MS63	MS65
Value :	50	80	130	190	275	900
ANACS Pop.:	[28]	(10)	64,	(8)	63,	(3) 62

Comments : The D mintmark also exhibits strike doubling, making it appear like a repunched D east.



1950-S/D

OMM-001

Cross Reference: WOMM-001, OMM #1, FS-22, Breen 4351

Description: *Over Mintmark S/D.*

The top serif of the D is seen above the left curve of the S. The top right of the D is seen from the top serif of the S down to the middle of the S. The lower serif of the D is seen below the bottom serif of the S.

Die Markers:

Obverse - Die crack through the base of the neck above the date. Die crack from the field into the top of the head below the B of LIBERTY. Die crack through the top of the head below the BER of LIBERTY.

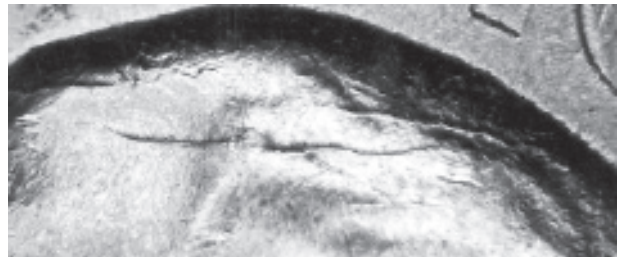
Reverse - Several die scratches through the outside edge of the left wing and in the field outside the left wing. Several die scratches between the second L of LIBERTY and the branches above.

VF XF AU MS60 MS63 MS65

Value : 40 70 125 180 250 600

ANACS Pop.: [23] 66, (8) 65, (9) 64, 63, (2) 62

Comments : This variety is more common in high grade than the 1950D/S OMM-001. Both varieties are highly sought after by collectors and sell quickly.



1953-D/S

OMM-001

Cross Reference: WOMM-001, OMM #1

Description: *Over Mintmark D/S.*

The serif and most of the top of the S are seen above the D. The upper left curve of the S is seen to the left of the upper serif of the D. The middle bar of the S is seen in the middle of the D above the center.

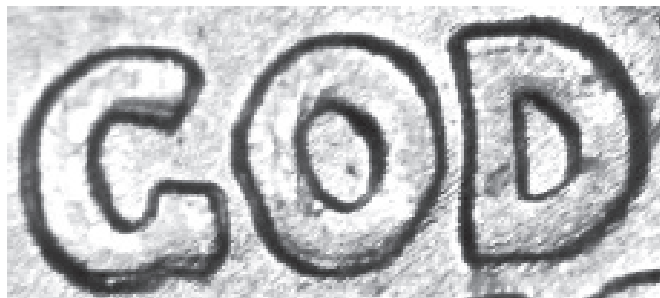
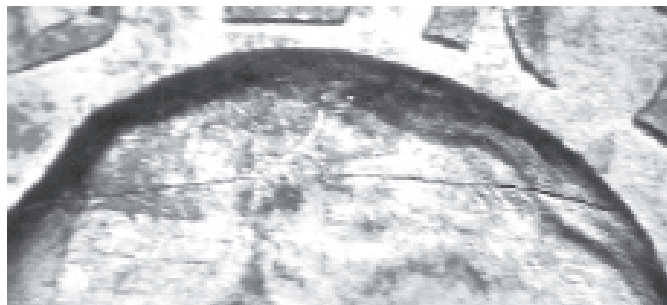
Die Markers:

Obverse - Doubling seen on IN GOD WE TRUST. LDS - Die crack across the base of the neck. Die crack through the top of the head below BERT of LIBERTY

Reverse - Die crack through the left wing edge.

	VF	XF	AU	MS60	MS63	MS65
Value :	10	20	45	75	125	240
ANACS Pop.:	[33]	(2)	65,	(18)	64,	(8) 63

Comments : This is also a triple punched D with the remnants of two Ds seen to the left.



***TRADE DOLLAR
OVER MINTMARKS***

1875-S/CC

OMM-001

Cross Reference: WOMM-001, OMM #1, Breen 5792

Description: *Over Mintmark S/CC.*

The complete outline of the second C mintmark is seen to the right of the S.

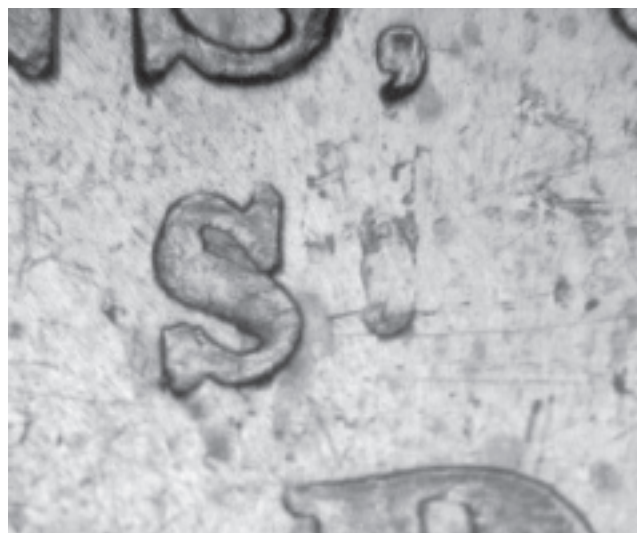
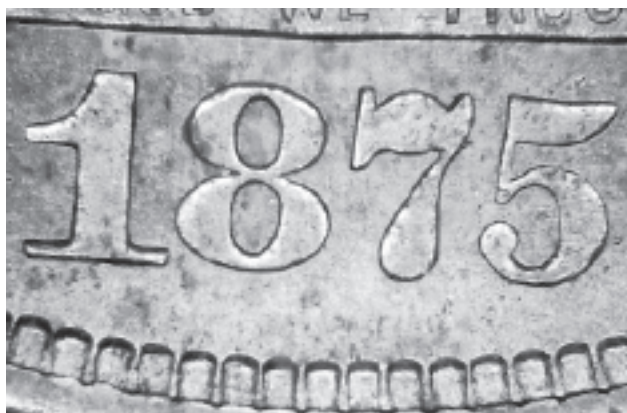
Die Markers:

Obverse - None noted.

Reverse - Die scratch through the top of ERI of AMERICA. Die scratch from the bottom of the first S through TA of STATES.

	VF	XF	AU	MS60	MS63	MS64
Value :	350	500	1000	2000	9000	18000
ANACS Pop.:	[4]	62,	(3)	60		

Comments : The complete outline of the second C mintmark shows. The first mintmark should be under the S; there are no signs of the C within the S. Repunching of the S mintmark seen.



***MORGAN DOLLAR
OVER MINTMARKS***

1900-O/CC

Cross Reference : VAM-7, VAM-10,
OMM #1, OMM #2

Description : *Over Mintmark O/CC.*

Both CCs are seen underneath the O mintmark. On the left C, only the bottom left curve is seen. The bottom of the right C is seen protruding from the lower right side of the O mintmark and extending out to the serif. The top of both Cs is not seen.

Repunched Date: VAM-7, 1900/0

Repunched first 0 seen below the bottom.

Die Markers:

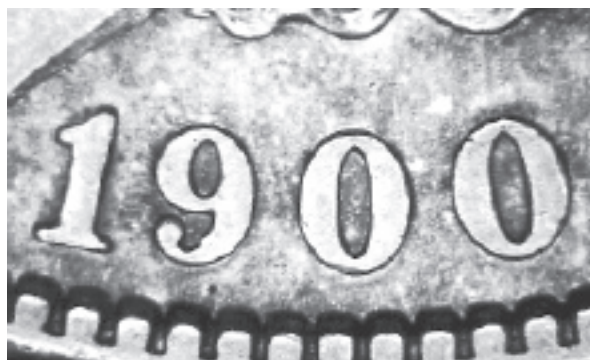
Obverse - VAM-10. Small die crack from the top of the 1 to the neck.

Reverse - VAM-10. Die crack through the top of NITE of UNITED. Small die gouge below the chin of the eagle.

	XF	AU	MS60	MS63	MS64	MS65
Value :	40	90	160	400	625	1300
ANACS Pop.:	[22]	(3)	64,	(5)	63,	(9) 62

Comments : OMM-001 was used with two different obverses, VAM-7 and VAM-10. The VAM-10 obverse has a repunched first 0 seen below the bottom. Of the six 1900-O OMMs, the CCs of this variety are the lowest in relation to the O mintmark. The bottom of both Cs are almost level with the bottom of the 0 mintmark. This is the best attribute when remembering this variety for identification. ANACS has certified 281 1900-O/CC uncirculated specimens without a designation of a VAM number.

OMM-001



Cross Reference : VAM-8

Description : *Over Mintmark: O/CC.*

Both CCs are seen underneath the O mintmark. The left C is seen as a thin, almost continuous curved line from the top of the O to the bottom. The right C is seen as two thick strips of metal from the top and bottom on the right side of the O.



Repunched Mintmark: O/O

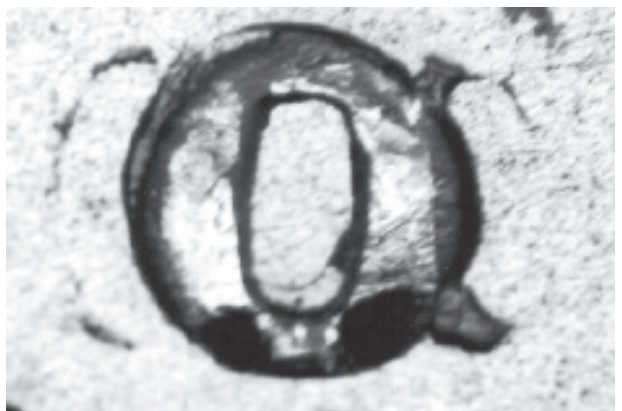
Repunched O mintmark north west seen above the top left of the O and at the center of the right inside.



Die Markers:

Obverse - Die scratch from the U through M of UNUM to the rim. Die scratch from the M of UNUM through one star to the rim.

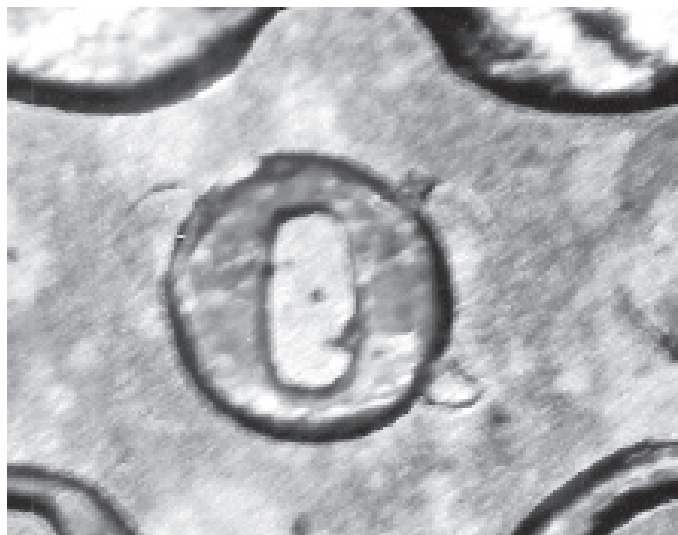
Reverse - EDS - Two die scratches through ON of ONE. Die scratch through the E of AMERICA to the rim.



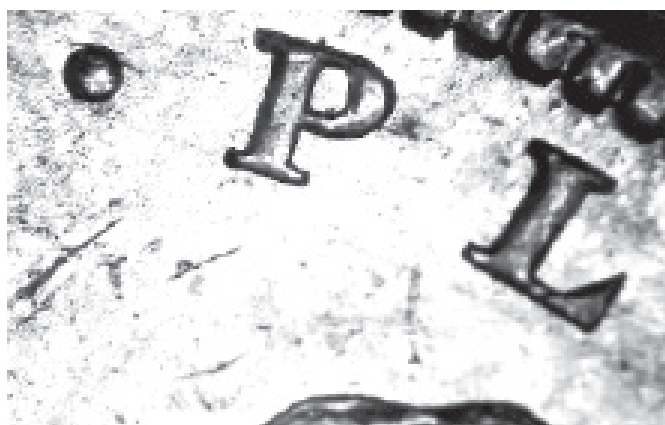
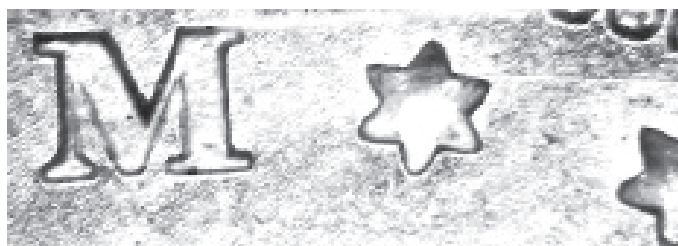
	XF	AU	MS60	MS63	MS64	MS65
Value	: 40	90	170	450	675	1400
ANACS Pop.:	[27]	65,	(7) 64,	(12) 63,	(5) 2	

Comments : This variety is different from that of the 1900 O/CC VAM-8A. The repunched mintmark is different and the location and thickness of the CCs are definitely different. The die markers on both the obverse and reverse are completely different. The next page shows the die markers from both VAM-8 (OMM-002) and VAM-8A (OMM-003). There is no dispute that they are different.

1900-O OMM-002 VAM-8



1900-O OMM-003 VAM-8A

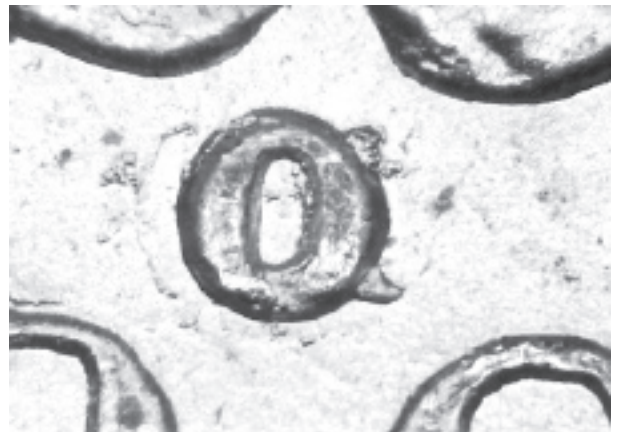


Cross Reference : VAM-8A**Description :** *Over Mintmark: O/CC.*

Both CCs are seen underneath the O mintmark. The left C is seen as a thin, almost continuous curved line from the top of the O to the bottom. The right C is seen as two thick strips of metal from the top and bottom on the right side of the O.

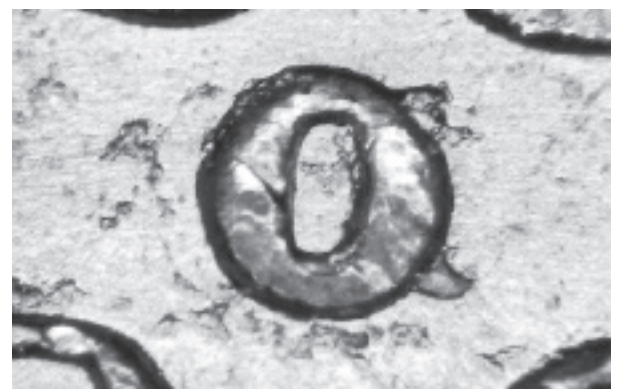
**Repunched Mintmark:** O/O

Repunched O mintmark northwest seen above the top left of the O and above the bottom. Notice that the second O mintmark is much heavier struck than on the VAM-8.

**Die Markers:**

Obverse - Two die cracks in cap. Die crack through the top of the 19 to the neck. Die crack from the left dot, through the P, to the top of the head. Die clashing in front and back of the head.

Reverse - Rust spots in and around the mintmark. Die crack through ON of ONE. Die crack through left dot, UNITED STATES OF. Die crack through AMERIC.



	XF	AU	MS60	MS63	MS64	MS65
Value :	40	90	160	400	625	1300
ANACS Pop.:	[47]	65,	(9) 64,	(12) 63,	(19) 62	

Comments : This variety is different from 1900 O/CC VAM-8. The repunched mintmark is different and the location and thickness of the CCs are definitely different. Also, this O mintmark here is tilted to the right.

1900-O/CC

OMM-004

Cross Reference : VAM-9, OMM #3

Description : *Over Mintmark: O/CC.*

Both CCs are seen underneath the O mintmark. On the left C, the entire outline of the curve is seen to the left of the O mintmark. On the right C, the top and bottom curves and serifs are seen.

Repunched Date: 1900/900

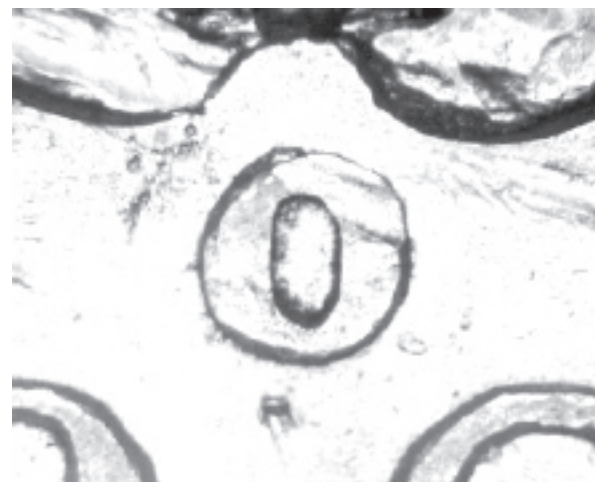
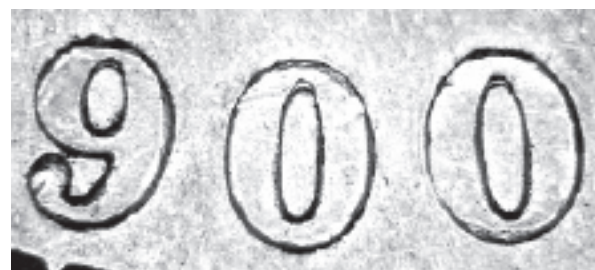
Repunched 9 seen below the top. Repunched 0 seen below the top. Repunched second 0 seen below the top.

Die Markers:

Obverse - Die crack from the top of the 1 through the neck and first star.

	XF	AU	MS60	MS63	MS64	MS65
Value :	225	425	675	900	1600	2500
ANACS Pop.:	[2] 64, 61					

Comments : This variety is the rarest of the six 1900-O/CC varieties. ANACS has slabbed no BU specimens to date and has slabbed BU specimens of the other five OMMs for this date. Even though this variety is not as dramatic as OMM-002 (VAM-8) or OMM-006 (VAM-12) it should easily command a greater premium because of its elusive rarity. In the ANACS population report for March of 1998, there are 247 1900-O/CC varieties slabbed without a designation of a VAM number.



1900-O/CC

OMM-005

Cross Reference : VAM-11, OMM #4

Description : *Over Mintmark: O/CC.*

Both CCs are seen underneath the O mintmark. On the left C, EDS shows entire C. LDS specimens show the lower half can be seen as a curved line from the bottom left of the O mintmark. The upper part of the left C is seen as a light outline. The top of the left C is not seen. The bottom of the left C is seen from the bottom right of the O mintmark to the serif of the C.

Die Markers:

Obverse - All states - Die crack from the hair on back of the head down to the first star on the right. EDS - Die crack through PLU. Die crack through M, top two right stars. LDS - Die crack through the base of the neck. Die crack through the top three stars on the left up through E, PLUR of PLURIBUS. Die crack through US of PLURIBUS. Die crack from the M of UNUM through the top two stars on the right. Die crack on top of the head through the crown. Two die cracks seen on the cap.

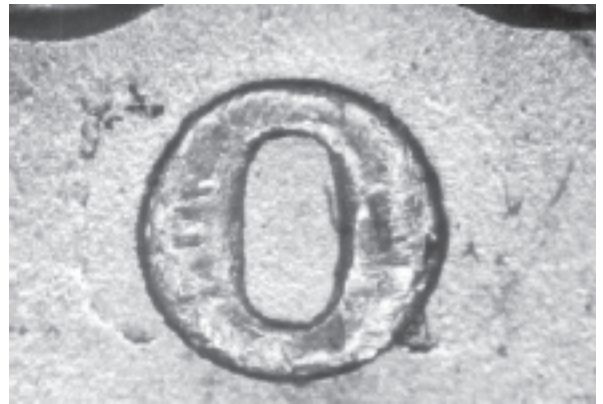
Reverse - EDS - Die crack from left star to U. LDS - Die crack from the O of ONE, through the left star, UNITED STATES OF. Die cracks from the top of both wreath tops up through the wings.

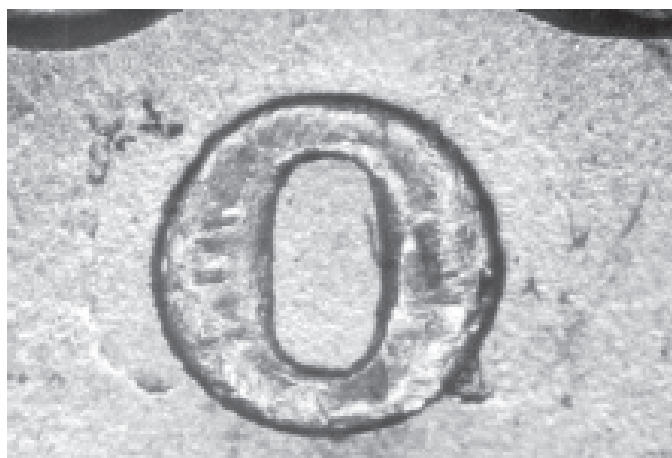
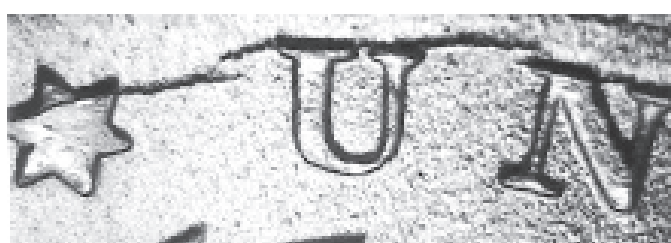
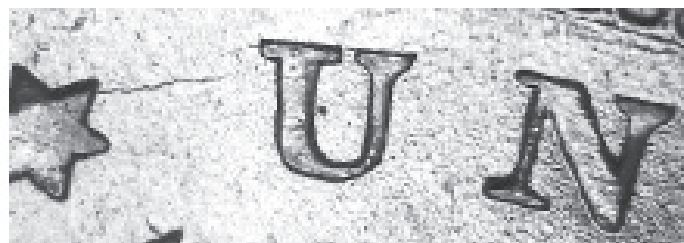
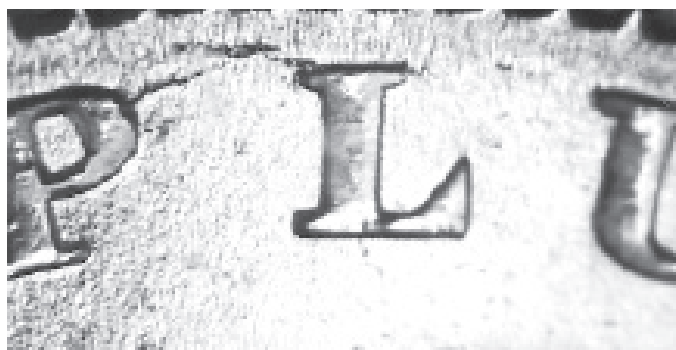
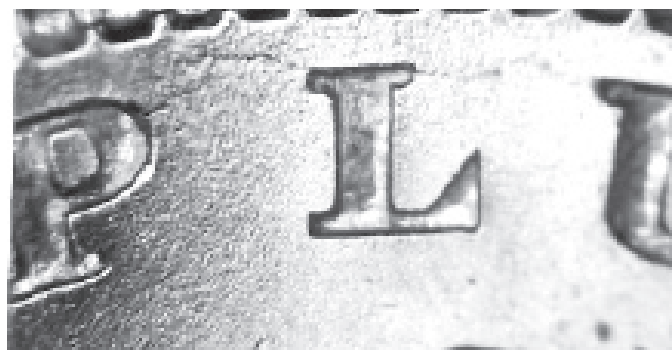
XF AU MS60 MS63 MS64 MS65

Value : 40 90 160 400 625 1300

ANACS Pop.: [127] (8) 65, (24) 64, (42) 63

Comments : On the following page, the left side shows the EDS and right side shows the LDS.



1900-O OMM-005 Early Die State**1900-O OMM-005 Late Die State**

1900-O/CC

Cross Reference : VAM-12, FS-008,
Breen 5648, OMM #5

Description : *Over Mintmark O/CC.*

Both CCs are seen underneath the O mintmark. The left C is high with the entire outline visible of the curve including the top serif. On the right C, the upper curve and serif are bold with the lower curve being weak with no serif visible.

Die Markers:

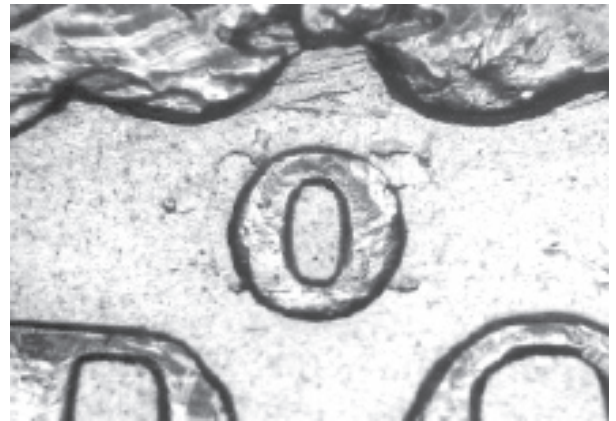
Obverse - Die crack from the neck to the first star on the left.

Reverse - Die crack through the top of NIT of UNITED. Die crack through the top of TES of STATES. Die scratch from the rim through ME of AMERICA. Many heavy die scratches through the ribbon.

	XF	AU	MS60	MS63	MS64	MS65
Value :	40	90	160	400	625	1300
ANACS Pop.:	[54]	(2)	65,	(14)	64,	(23) 63

Comments : This variety is easy to identify as it is the only OMM for this date that shows the top of both serifs of the CCs. These OMMs have a simple explanation for their creation; the Carson City Mint stopped minting Morgan Dollars in 1893. In 1899, when that Mint was officially changed to an assay office, all equipment was shipped to the Philadelphia Mint. This included several reverse dies that had CC mintmarks on the reverse. These dies were stamped with an O and sent to New Orleans and used there.

OMM-006



***LIBERTY SEATED DIME
LARGE/SMALL MINTMARKS***

1890S

RPM-001

Cross Reference: FS-006, RPM #1,
Breen 3451

Description: *Repunched Mintmark ?.*

A bar is seen going across the top of the S mintmark. A small piece of metal is seen to the right of the middle of the S. No sign of a repunched S is seen in the lower part of the S. This is not the result of a different size S mintmark punch.

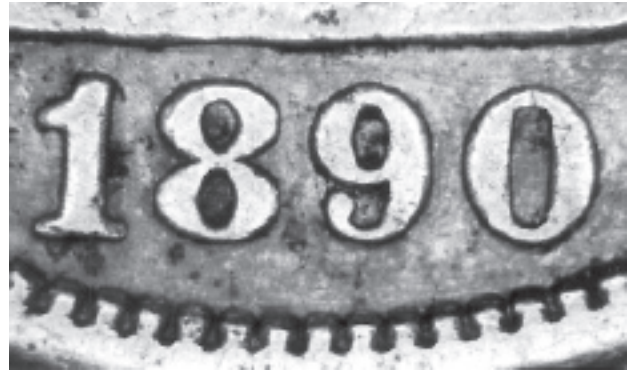
Die Markers:

Obverse - None noted.

Reverse - None noted.

ANACS Pop.: [0]

Comments : This variety has been listed as a medium over small S mintmark in several books. There is no physical evidence that the repunched S is a different size. A bar is seen across the top of the S, it is possible that this is the result of a die crack or a heavy die scratch or something else, the curve of the metal is not as dramatic as the curve of the top of a normal S mintmark. Examine the photos of the 1891S Liberty Seated dime Large / Small S, the upper bar of the small S, notice how strong the curve is. The fact that there is an 1891S Large over Small S most likely led people to the conclusion that there must be more. On this variety there is no remnants of a repunched mintmark in the lower part of the S. In the upper part, the metal does not match the width and curvature of a small S mintmark. The physical evidence does not support the conclusion that this is the result of a different size mintmark.



1891S Large/Small Mintmark

RPM-001

Cross Reference: FS-007, RPM#1, Breen 3466

Description: *Repunched Mintmark.*

A medium S is struck over a small S. The upper bar and serif of the small S are seen in the top of the medium S, and the lower bar and serif of the small S are seen in the bottom of the medium S.



Die Markers:

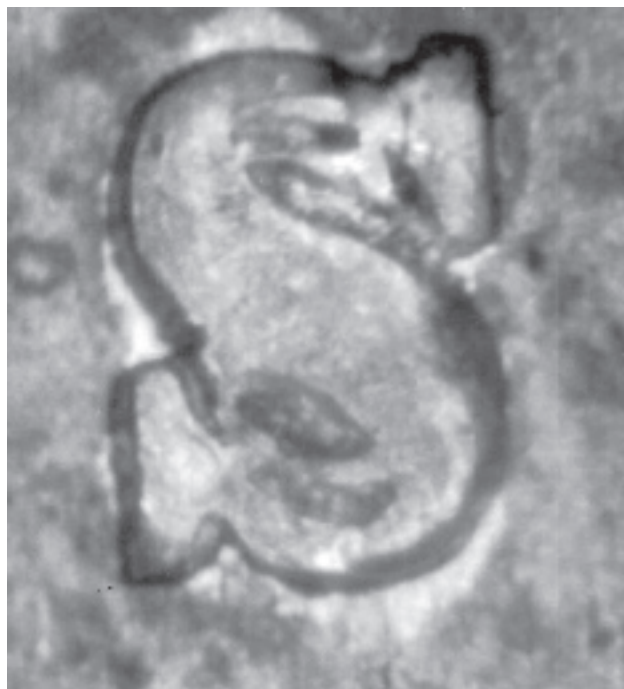
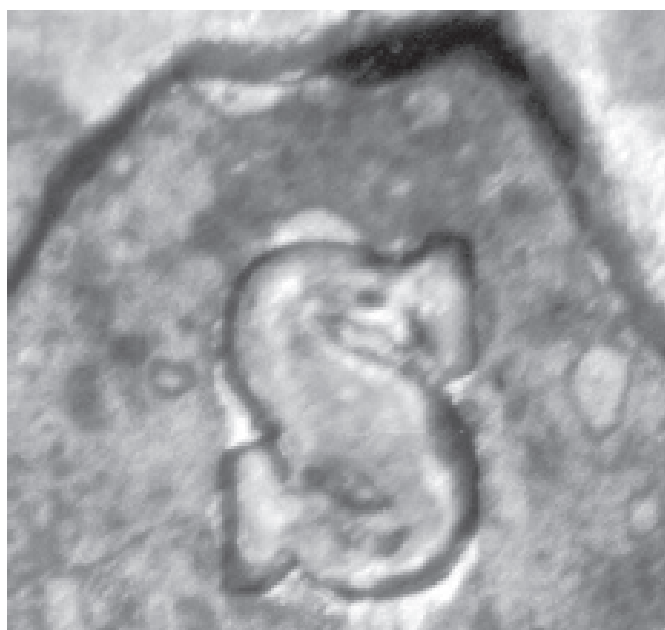
Obverse - Two die scratches seen from the right side of the shield.

Reverse - None noted.



	F	VF	XF	AU	MS60	MS63
Value :	40	60	100	200	350	750
ANACS Pop.:	[7]	61,	58,	50,	45,	20, 6

Comments : ANACS has certified seven, the highest being MS61. Being one of two confirmed different size mintmarks makes this variety highly collectible.



***LIBERTY SEATED QUARTER
LARGE/SMALL MINTMARKS***

1856S Large/Small Mintmark

RPM-001

Cross Reference: FS-005, RPM #1,
Breen 4010

Description: *Repunched Mintmark.*

A large S was punched over a small S mintmark. The smaller S is easily seen to the right of and in the lower left portions of the large S.

Die Markers:

Obverse - None noted.

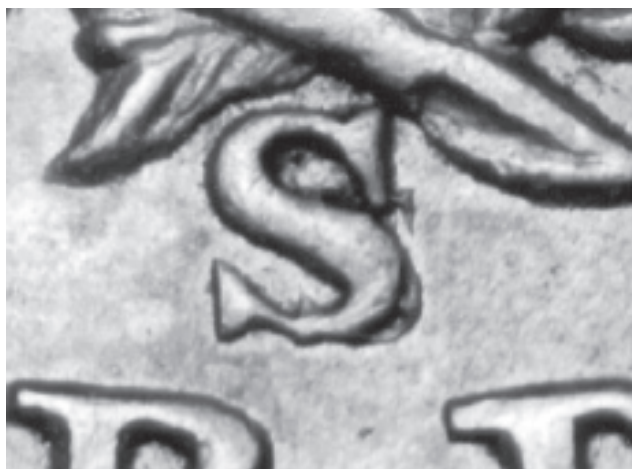
Reverse - None noted.

F VF XF AU MS60

Value : 120 250 500 750 1500

ANACS Pop.: [6] 40, 20, (2) 10, 6

Comments : Of the two large over small mintmarks known, this is the most dramatic, as the S is so clear. ANACS has certified six circulated specimens and no uncirculated ones. The highest grade certified is XF40.



***LINCOLN CENT
MINTMARK OVER HORIZONTAL
OR INVERTED MINTMARK***

1909S S/ Horizontal S

RPM-001

Cross Reference: FS-12.3, RPM #2, Breen 2058, WRPM-001

Description: *Repunched Mintmark.*

The S was initially punched horizontally. The upper serif of the repunched S is seen protruding from the middle of the right side of the S. The upper left curve of the repunched S is seen above the top right of the final S. On later die state specimens, the upper left curve of the horizontal S is barely seen.



Die Markers:

Obverse - None noted.

Reverse - None noted.

VF XF AU MS60 MS63 MS65RD

Value : 60 90 120 150 200 300

ANACS Pop.: [264] 67RD, (8) 66RD, (31) 65RD

Comments : This is not a rare variety. ANACS has certified 264 uncirculated specimens. This variety can usually be found for sale on Teletrade or in auctions.

1950D D/ Horizontal D

WRPM-005

Cross Reference: None

Description: *Repunched Mintmark.*

The bottom of the horizontal D is seen to the left of the normal D. The bottom of the vertical bar of the horizontal D is seen directly below the upper serif of the normal D.



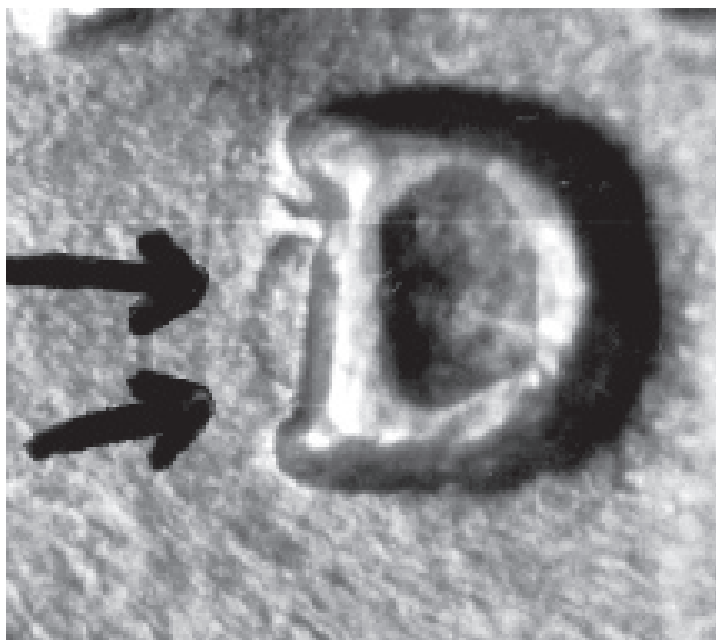
Die Markers:

Obverse - None noted.

Reverse - None noted.

	VF	XF	AU	MS60	MS63	MS65RD
Value :	10	15	20	25	50	80
ANACS Pop.:	[0]					

Comments : A variety which is known, but has not widely been published. Only a few specimens have been found to date.



1960D Refuted D/ Horizontal D

RPM-009

Cross Reference: RPM #9, WRPM-002

Description: *Repunched Mintmark.*

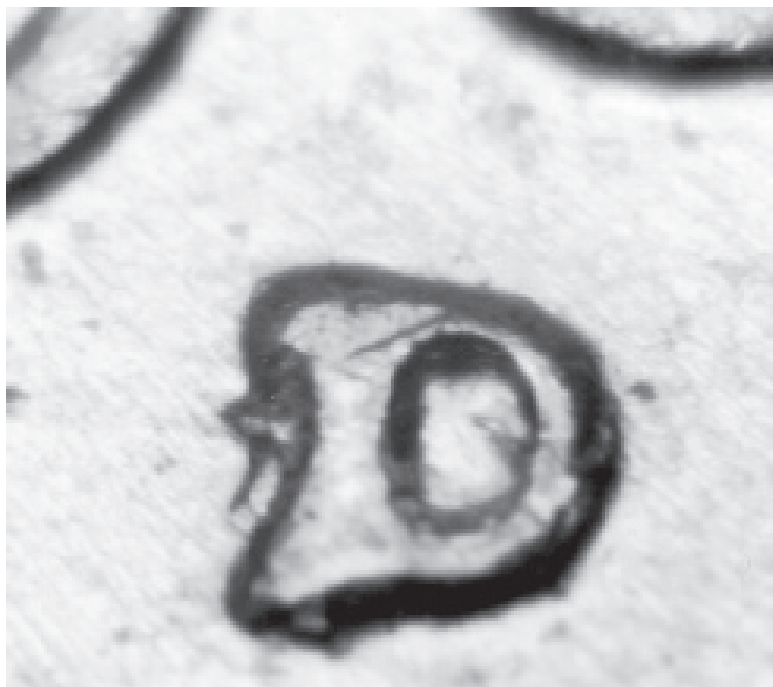
Triple punched mintmark. Repunched
D south and west.

Die Markers:

Obverse - None noted.

Reverse - None noted.

Comments : This variety has been listed as a
D over horizontal D in other books. Study
has shown this variety simply to be a tripled
punched D.



1961D D/ Horizontal D

RPM-001

Cross Reference: RPM #1, WRPM-001

Description: *Repunched Mintmark.*

The D was first punched horizontally.
The bottom of the repunched D is seen
to the left of the D. The left bar of the
repunched D is seen below the top of
the final D.

Die Markers:

Obverse - Many die scratches seen in the field
in front and back of the head.

Reverse - Many die scratches throughout the
entire reverse.



VF XF AU MS60 MS63 MS65RD

Value : 1 1 5 8 15 30

ANACS Pop.: [294] (7) 66RD, (86) 65RD, (142) 64RD

Comments : This variety is not difficult to locate.

There are more than 100 RPMs known for
1961D. It is worth purchasing BU rolls as you
will usually find something good. This author
once found 20 of this variety in a single roll.



***JEFFERSON NICKEL
MINTMARK OVER HORIZONTAL
OR INVERTED MINTMARK***

1942D D/ Horizontal D

RPM-001

Cross Reference: FS-27, RPM #1, Breen 2681, WRPM-001

Description: *Repunched Mintmark.*

The D is first punched horizontally.
The bottom of the repunched D is seen to the left of the D. The left bar of the repunched D is seen below the top of the final D.



Die Markers:

Obverse - Die gouge above the right side of the E in WE.

Reverse - None noted.

XF AU MS60 MS63 MS64 MS65

Value : 60 90 175 250 400 700

ANACS Pop.: [19] (2) 66, (2) 65, (7) 64, (3) 63

Comments : Rare in mint state. Listed in the Red Book. ANACS has certified 19 uncirculated specimens. One of the more sought-after Jefferson nickel varieties.

1946D D/ Inverted D

RPM-001

Cross Reference: FS-31, RPM #2, Breen 2708, WRPM-001

Description: *Repunched Mintmark.*

Repunched D over inverted D. The right side of the upside down D is protruding from the left side of the final D.

Die Markers:

Obverse - None noted.

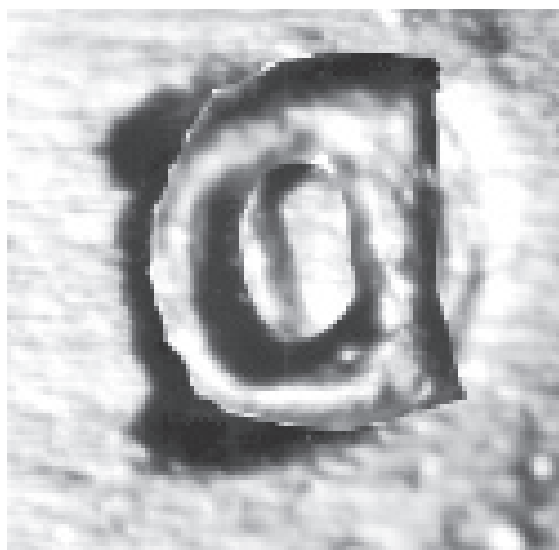
Reverse - None noted.

XF AU MS60 MS63 MS64 MS65

Value : 50 80 125 250 400 600

ANACS Pop.: [63] (4) 66, (28) 65, (26) 64, (2) 63

Comments : There are no remnants of an inverted D seen on the inside of the normal D except for a small piece of metal below the top left, inside of the D. There are some who believe this to be the result of a die gouge. An overlay shows that the curvature and size of the metal are very close to those of the front of the D.



1953D Refuted D/ Inverted D

RPM-001

Cross Reference: RPM #1

Description: *Repunched Mintmark.*

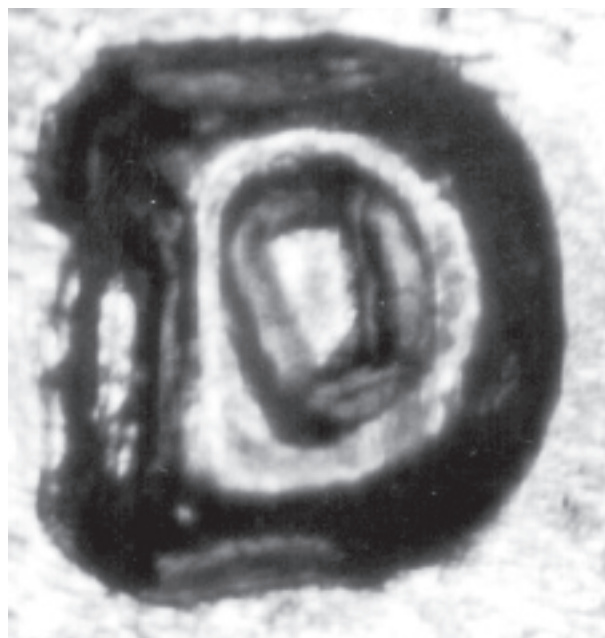
Repunched D west seen to the left of the upright and below the bottom.

Die Markers:

Obverse - None noted.

Reverse - None noted.

Comments : This variety was properly listed in Wexler and Miller's RPM book as RPM #1, D/D west. Others have since alleged that this variety was a D over inverted D. This is not the case. There is no metal of the secondary D on the inside of the D or above the D. The metal to the left of the D is not curved like the front of an inverted D would be. The evidence of the size and shape of the metal of the secondary D supports the conclusion that this is just a normal RPM.



1958D D/ Inverted D

RPM-003

Cross Reference: None

Description: *Repunched Mintmark.*

Repunched D over inverted D. The right side of the upside down D is protruding from the left side of the final D. The metal of the inverted D starts right below the serif, curves outward and down thinning out. About halfway down, there is a small break; then the metal is again thick, extending to the lower serif.

Die Markers:

Obverse - None noted.

Reverse - Die crack on the inside of the D on the right side, starting on the top right and extending downward to right above the middle of the right inside.

	XF	AU	MS60	MS63	MS64	MS65
Value :	20	30	40	75	100	125
ANACS Pop.:	[0]					

Comments : The curve of the upper metal clearly is in the shape of an inverted D. The lower metal is straight and does not appear to follow the shape of the front of an inverted D. It is possible that this is just a die crack.



***LIBERTY SEATED DIME
MINTMARK OVER HORIZONTAL
OR INVERTED MINTMARK***

1891O O/ Horizontal O

RPM-001

Cross Reference: FS-8, RPM #2, Breen 3462

Description: *Repunched Mintmark.*

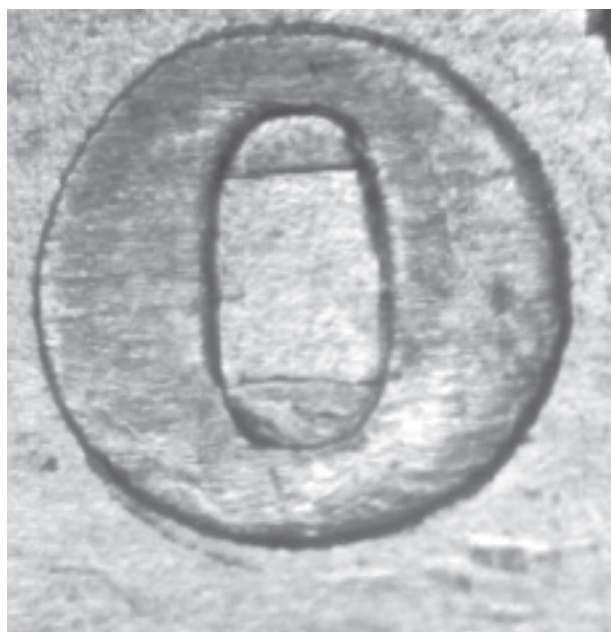
The O mintmark was first punched horizontally. The left sides of the repunched O are seen below the top and above the bottom of the final O. This variety also shows tripling on the mintmark with an additional repunched O seen below the bottom of the normal O.



Die Markers:

Obverse - Die crack through UNITED STATES and the top of the head. Die crack through OF AMERICA to the base of the rock.

Reverse - Die crack from the left ribbon through the wreath, splitting at about 9:30 with one crack going to the rim, the other continuing up through the wreath to about 7:30. Die crack from the wreath about 12 o'clock to the left wreath. Die crack from the wreath about 3 o'clock down through the wreath into the field to the right of the right ribbon.



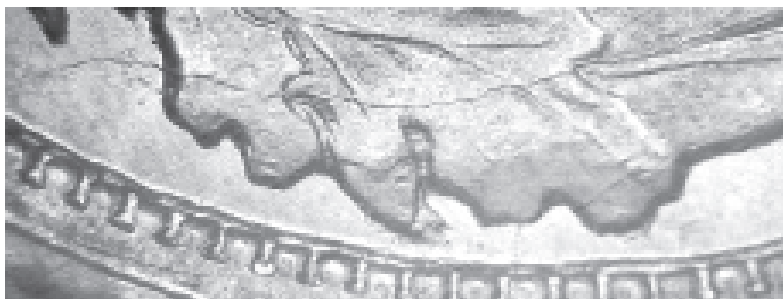
VF XF AU MS60 MS63 MS65

Value : 100 200 400 600 900 1500

ANACS Pop.: [6] (2) 45, 40, 35, 25

Comments : This variety is very rare in Mint State. ANACS has certified six circulated specimens and no uncirculated ones. Listed in the Red Book, but no photo shown. There is no metal from the horizontal O seen on the outside of the normal O. The inside metal of the horizontal O matches approximately that of the normal O in width, straightness. The top of

the metal of the repunched O is concave. All of the evidence points to this variety being a horizontal O.



***BARBER DIME
MINTMARK OVER HORIZONTAL
OR INVERTED MINTMARK***

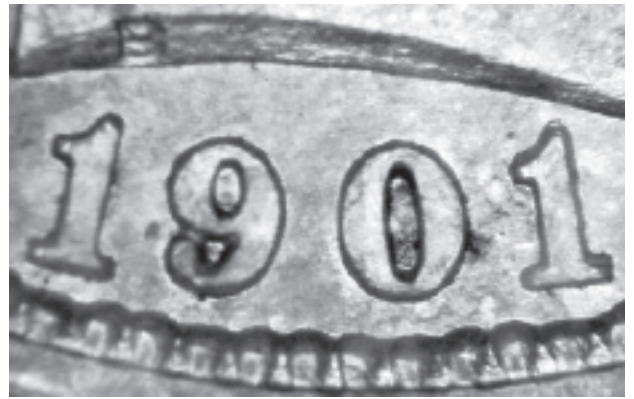
1901O O/ Horizontal O

RPM-001

Cross Reference: FS-20, RPM #1,
Breen 3529, Lawrence-101, RPD-004

Description: *Repunched Mintmark.*

The O mintmark was first punched horizontally. The left sides of the repunched O are seen below the top and above the bottom of the final O. There is no metal seen on the outside of the O mintmark.



Die Markers:

Obverse - Two separate obverses. The first with a repunched date (RPD-001), top picture to the right. The second does not have a repunched date and is slightly more to the right; see top of next page.

Reverse - Die crack from the left side of the O mintmark to the left ribbon, then up through the wreath to about 9 o'clock. Die crack from the bottom right side of the O mintmark to the right ribbon. Late die states show clashing on the obverse and reverse.

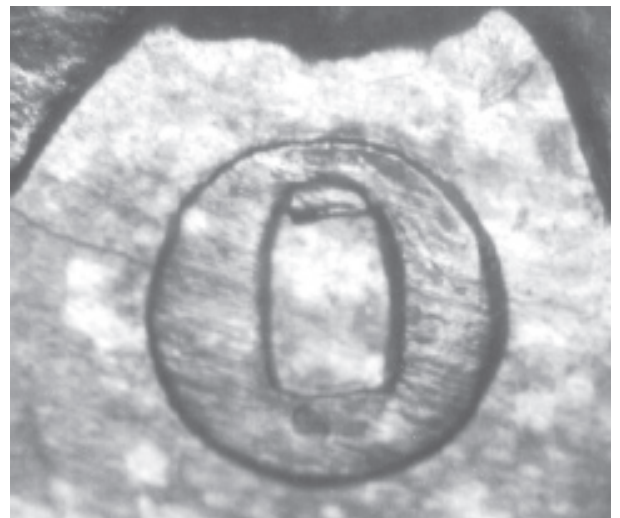


VF XF AU MS60 MS63 MS65

Value : 100 175 300 500 750 1400

ANACS Pop.: [18] (2) 62, 58, 55, (2) 50, 40, 20

Comments : This variety is very rare in Mint State. ANACS has certified eighteen circulated specimens and two uncirculated ones. Listed in the Red Book, but no photo shown.



Comments continued: The top of this page shows the two different obverse dies; the first with a repunched date (top photo), and the second slightly more to the right (second photo). The first high-grade specimen examined (photo below on the right), had a very sheered top edge on the lower part of the horizontal O. It also displayed a 45 degree slope, which was not consistent with the inside metal of an O mintmark. This led to the initial conclusion that this was not a horizontal O mintmark. Several high-grade earlier die states were recently examined that clearly showed that this variety was the result of a horizontal O mintmark.



***MERCURY DIME
MINTMARK OVER HORIZONTAL
OR INVERTED MINTMARK***

1945D D/ Horizontal D

RPM-002

Cross Reference: WRPM-002

Description: *Repunched Mintmark.*

The D was first punched horizontally. The bottom of the repunched D is seen to the left of the D. The left bar of the repunched D is seen below the top. The right side of the repunched D is seen above the bottom of the final D.

Die Markers:

Obverse - None noted.

Reverse - None noted.

	VF	XF	AU	MS60	MS63	MS65
Value :	60	100	150	180	300	400
ANACS Pop.:	[6]	(2)	58,	55,	50,	45

Comments : Horizontal mintmarks are usually best seen on a D mintmark. Perhaps this is because a D mintmark is normally tall and thin with an empty middle. Here we see the bottom of the horizontal D and also the front and back. Compare to the 1945S/horizontal S shown next.



1945S S/ Horizontal S

RPM-002

Cross Reference: WRPM-002, FS-11, RPM #3, Breen 3690

Description: *Repunched Mintmark.*

The S was first punched horizontally.

The top of the repunched S is seen between the right side top serif and middle of the final S.

Die Markers:

Obverse - None noted.

Reverse - None noted.

	VF	XF	AU	MS60	MS63	MS65
Value :	60	80	100	140	200	300
ANACS Pop.:	[5]	64	63	60	(2)	58

Comments : Both this variety and the 1945D/ horizontal D are rare and difficult to find in Mint State. This variety was listed, but no photos were shown in Wexler and Miller's 1983 RPM book. Since that book, only a few have been found.



***ROOSEVELT DIME
MINTMARK OVER HORIZONTAL
OR INVERTED MINTMARK***

1953D D/ Horizontal D

RPM-003

Cross Reference: RPM #3

Description: *Repunched Mintmark.*

The D was first punched horizontally. The upper serif of the repunched D is seen to the right of the upper portion of the final D. The left bar of the repunched D is seen below the middle of the final D.



Die Markers:

Obverse - None noted.

Reverse - None noted.

	VF	XF	AU	MS60	MS63	MS65
Value :	10	15	20	35	60	100
ANACS Pop.:	[4] 65, (2) 64, 62					

Comments : Another variety first published in Wexler and Miller's 1983 RPM book and few specimens have surfaced. ANACS has certified four uncirculated specimens. Definitely worth searching for.

1962D D/ Horizontal D

RPM-001

Cross Reference: WRPM-001

Description: *Repunched Mintmark.*

The D was first punched horizontally. The lower serif of the repunched D is seen to the left of the D. The left bar of the repunched D is seen below the top of the D. The upper serif of the repunched D is seen to the right of the top of the final D.



Die Markers:

Obverse - None noted.

Reverse - None noted.

	VF	XF	AU	MS60	MS63	MS65
Value :	10	15	20	35	60	100
ANACS Pop.:	[0]					

Comments : This is a newly discovered variety that so far is very rare. ANACS has certified no specimens.

***LIBERTY SEATED QUARTER
MINTMARK OVER HORIZONTAL
OR INVERTED MINTMARK***

1877S S/ Horizontal S

RPM-001

Cross Reference: FS-7, RPM #1, Breen 4095

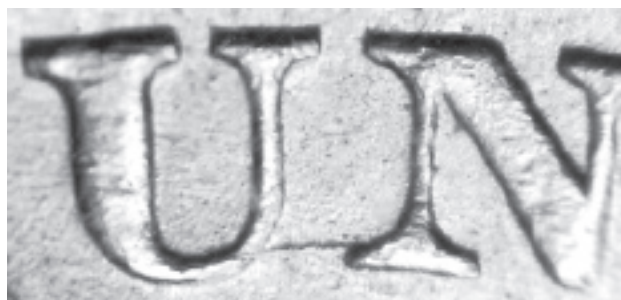
Description: *Repunched Mintmark.*

The first S was punched horizontally 90 degrees clockwise. The horizontal bottom of the repunched S is seen to the left of the lower part of the final S. The top of the horizontal S is seen to the left of the lower part of the S.

Die Markers:

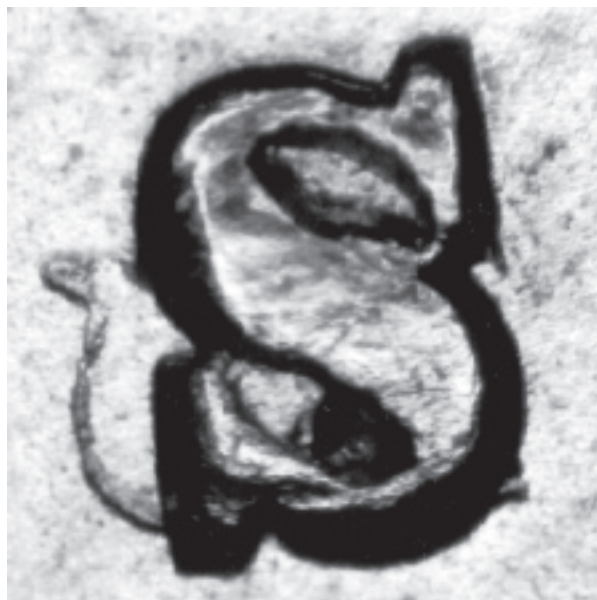
Obverse - None noted.

Reverse - Die crack through the bottom of UN of UNITED.



	VF	XF	AU	MS60	MS63	MS65
Value :	125	200	325	600	1400	3000
ANACS Pop.:	[10]	64,	(2) 63,	(4) 62,	61,	60

Comments : ANACS has certified 10 uncirculated specimens. Listed in the Red Book. Difficult to locate in Mint State, but circulated specimens can still be found.



***WASHINGTON QUARTER
MINTMARK OVER HORIZONTAL
OR INVERTED MINTMARK***

1953D D/ Horizontal D

RPM-001

Cross Reference: None

Description: *Repunched Mintmark.*

The bottom the horizontal D is seen to the left of the D. The left of the horizontal D is seen below the top of the D.

Die Markers:

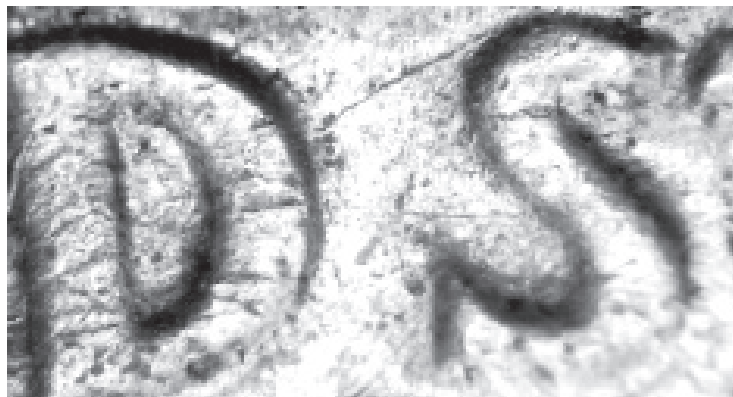
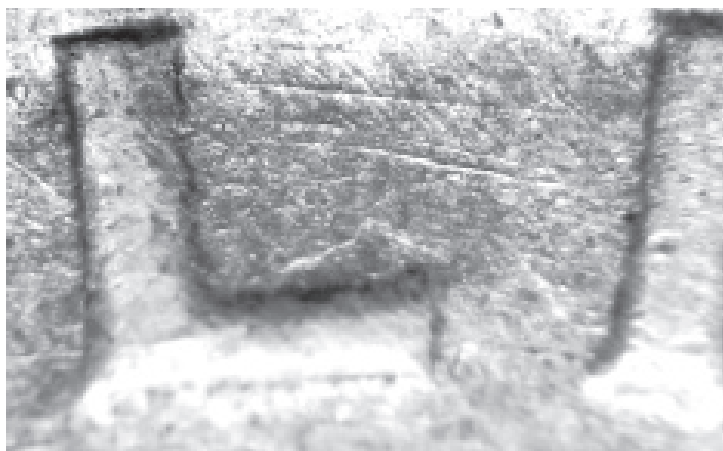
Obverse - Die scratches through the 953 of the date. Master die doubling seen on IN GOD WE TRUST. Two die scratches from the L of LIBERTY. Die scratch through the lower B of LIBERTY. Die scratches through ERT of LIBERTY.

Reverse - Two die scratches from the D of UNITED to the first S of STATES. Many die scratches through and above the wreath.

	VF	XF	AU	MS60	MS63	MS65
Value :	20	35	60	80	125	200
ANACS Pop.:	[0]					

Comments : Strike doubling shows D mintmark.
A higher grade specimen is needed to verify.





1956D D/ Inverted D

Cross Reference: RPM #1, FS-22.4

Description: *Repunched Mintmark.*

The inverted front of the D is seen through the middle of the D. The bottom bar of the inverted D is seen protruding from the top right of the D. The top bar of the inverted D is seen protruding just below the middle of the normal D.

Die Markers:

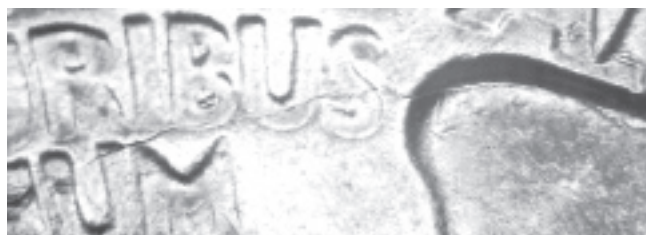
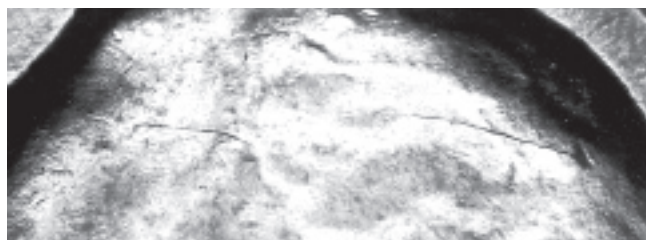
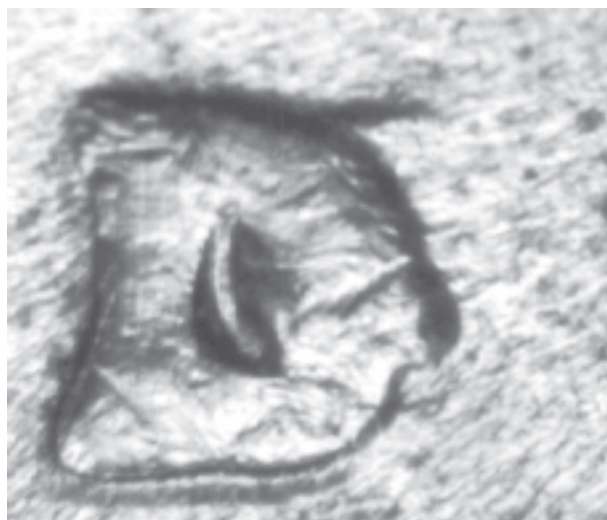
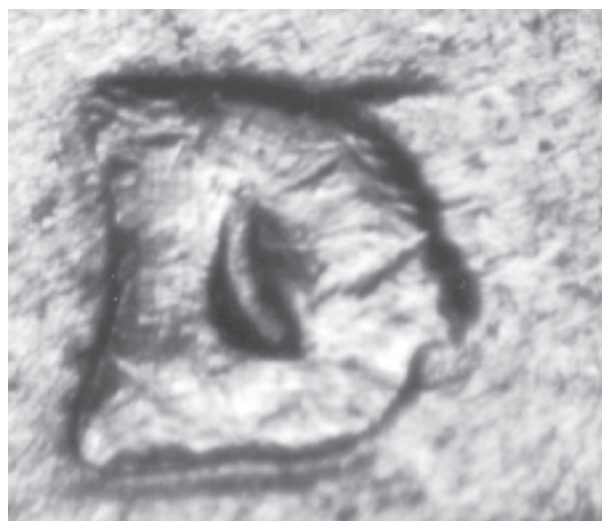
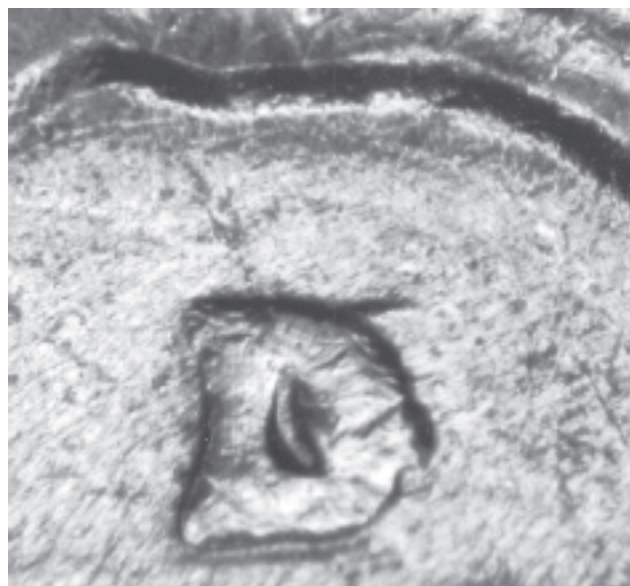
Obverse - Die crack from the top of the eyebrow north to the top of the head, then east across the head to the hair under the T of LIBERTY.

Reverse - Die crack from the Q of QUARTER up through the left wing. Die crack from the top of the right wing through BUS of PLURIBUS and UM of UNUM.

	VF	XF	AU	MS60	MS63	MS65
Value :	20	35	60	80	125	200
ANACS Pop.:	[33]	66,	(3) 65,	(19) 64,	(7) 63	

Comments : An unusual variety that is hard to believe as being an inverted D until you examine one.

RPM-001



1962D D/ Horizontal D

Cross Reference: RPM #1

Description: *Repunched Mintmark.*

The first D was punched horizontally 90 degrees clockwise. The bottom left and serif of the horizontal D are seen protruding from the top right of the normal D. Most of the upright of the horizontal D is seen as a very thin line extending from the serif. The outer curve of the horizontal D is seen extending from the normal D right above the middle of the normal D.

Die Markers:

Obverse - Many die scratches seen in front of the face and below the chin, behind the head.

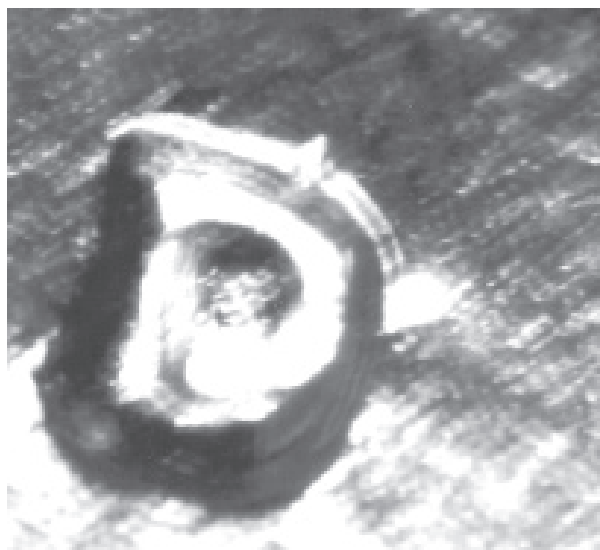
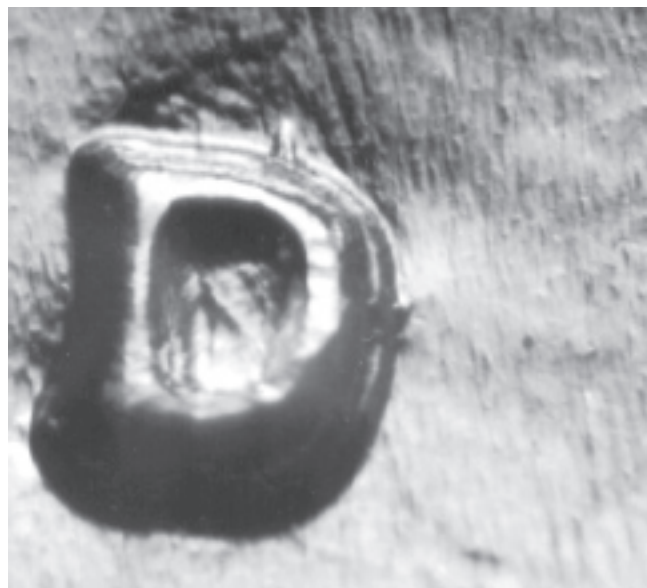
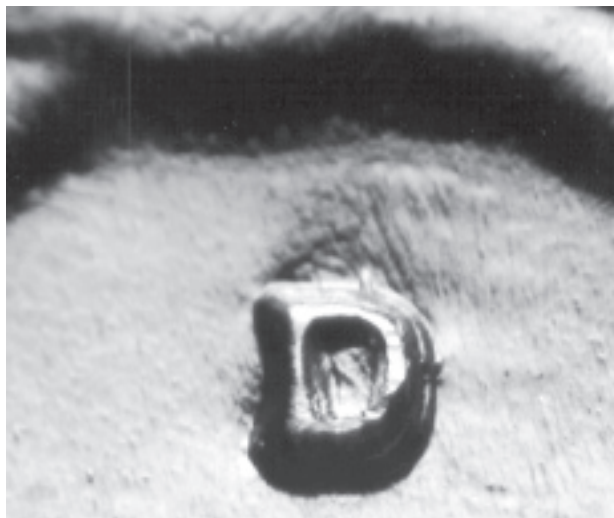
Reverse - None noted.

	VF	XF	AU	MS60	MS63	MS65
Value :	10	15	20	35	60	100
ANACS Pop.:	[1] 62					

Comments : This variety was published in Wexler and Miller's RPM book. It is difficult to validate from the photos that it is the result of a horizontal D. When you examine a coin, you can see the very light back of the horizontal D extending to the right from the serif at the top right of the normal D.



RPM-001



***LIBERTY SEATED HALF DOLLAR
MINTMARK OVER HORIZONTAL
OR INVERTED MINTMARK***

1845O O/ Horizontal O

RPM-001

Cross Reference: FS-2.5, Breen 4777

Description: *Repunched Mintmark.*

The first O was punched horizontally. One side of the repunched O is seen below the top of the normal O. A small portion of the side of the horizontal O is seen above the bottom, on the right side. No portion of the horizontal O is seen outside the normal O.

Die Markers:

Obverse - None noted.

Reverse - None noted.

	F	VF	XF	AU	MS60	MS63
Value :	80	200	325	450	1200	3500

ANACS Pop.: [4] 55, 45, 40, 30

Comments : Rare, with only a few specimens known. With no portion of the horizontal O seen outside the normal O, and with only a small piece of metal is seen above the bottom, it could be argued that there is not enough evidence to support that this variety was the result of a horizontally punched O mintmark.



1855O O/ Horizontal O

RPM-001

Cross Reference: FS-6, RPM #1, Breen 4863

Description: *Repunched Mintmark.*

The first O was punched horizontally. The sides of the repunched O are seen below the top and above the bottom of the final O. The left and right sides of the top of the repunched O are seen to the right of the final O.



Die Markers:

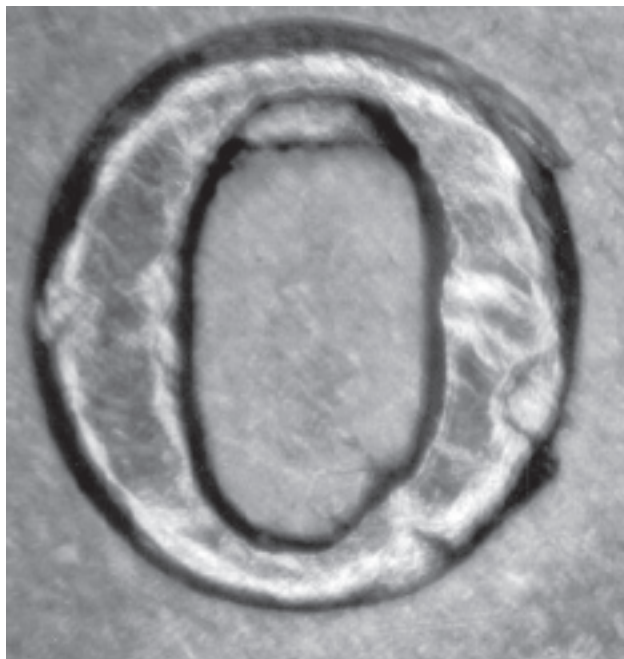
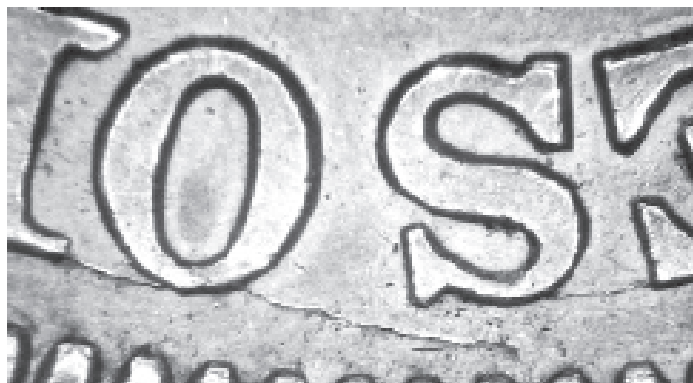
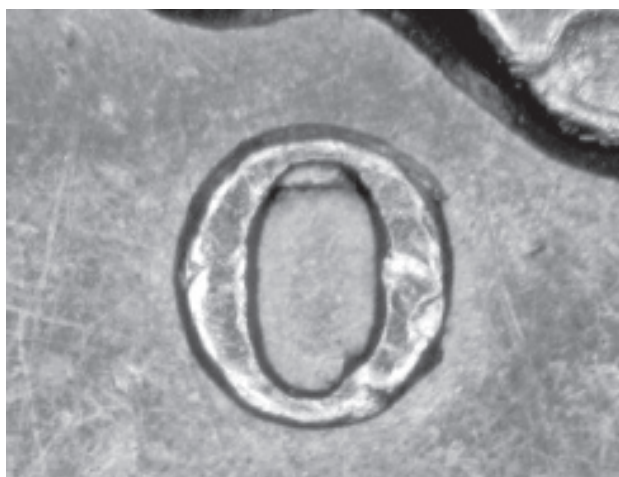
Obverse - None noted.

Reverse - Die crack from the rim through the top of OF AMERICA, bottom of HALF DOLLAR, top of UNITED STATES.

	F	VF	XF	AU	MS60	MS63
Value :	60	80	175	350	500	1500

ANACS Pop.: [0]

Comments : Much more common than the 1845O/horizontal O.



***MORGAN DOLLAR
MINTMARK OVER HORIZONTAL
OR INVERTED MINTMARK***

18790

RPM-001

Cross Reference: FS-2, RPM #1, Breen 5528, VAM-4

Description: *Repunched Mintmark.*

Tripled punched O; the bottom of an O is seen below the top of the O. The top of a second O is seen above the bottom of the final O.

Die Markers:

Obverse - None noted.

Reverse - None noted.

	VF	XF	AU	MS60	MS63	MS65
Value :	15	25	40	100	175	2500

Comments : This variety was listed as a tripled punched mintmark in the RPM book by Wexler and Miller. It was listed as an O/ Horizontal O in the VAM book and CP-III. Looking at the inside of the normal O mintmark, most of inside sides are straight; therefore, if you turned the O horizontally and look at the center, you should expect to see a straight line of metal. Looking at the metal below the top of the O, the metal is curved in a half-moon shape, similar to that of the bottom of an O. Looking at the metal above the bottom of the O, the metal is curved like the top of an O. In addition, if you look at the metal on the bottom, in the bottom right corner, a small space is seen which looks like part of the middle of the O. This lends to the conclusion that this is the top of an O, and that is the field for the middle of the repunched O south. The evidence points to the conclusion drawn in the RPM book: that this is the result of a tripled punched mintmark.



LINCOLN CENT
MISPLACED MINTMARKS

1919S Repunched Mintmark

RPM-001

Cross Reference: RPM #1, WRPM-001

Description: *Repunched Mintmark.*

Repunched S wide south with the bottom half of the repunched S seen below the bottom.

Die Markers:

Obverse - None noted.

Reverse - None noted.



VF XF AU MS60 MS63 MS65RD

Value : 5 10 25 75 150 2500

ANACS Pop.: [5] 65RB, (2) 61BR, (2) 60

Comments : Not fully separated, but very easily visible and well known.

1925S Repunched Mintmark

RPM-002

Cross Reference: RPM #3, WRPM-002

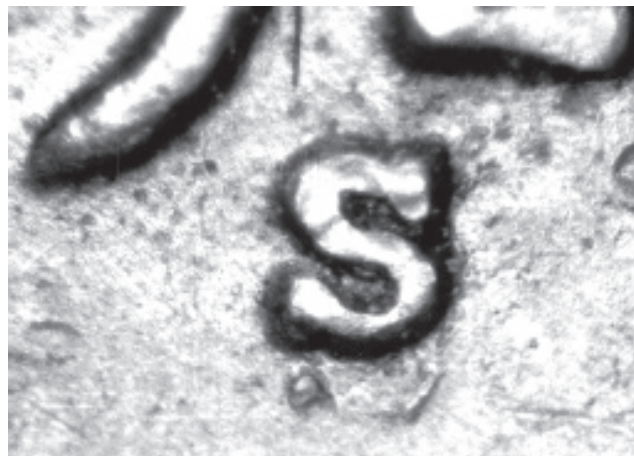
Description: *Repunched Mintmark.*

Repunched S wide south with the bottom half of the repunched S seen below the bottom.

Die Markers:

Obverse - None noted.

Reverse - None noted.



VF XF AU MS60 MS63 MS65RD

Value : 25 50 75 110 260 4500

ANACS Pop.: [1] 61

Comments : D and S minted coins are much rarer for the mid-1920s. Non variety coins for this year and mintmark are expensive in MS65RD. The prices are reasonable for circulated and lower grade mint state coins.

1943D Repunched Mintmark

RPM-001

Cross Reference: FS-19, RPM #1, Breen 2169, WRPM-001

Description: *Repunched Mintmark.*

Repunched D wide south west.

Die Markers:

Obverse - None noted.

Reverse - None noted.

	VF	XF	AU	MS60	MS63	MS65RD
Value :	20	45	75	90	150	250

ANACS Pop.: [46] 67, (6) 66, (8) 65, (22) 64

Comments : This variety is not fully separated, but is included as it is dramatic and well known and collected. This variety has realized some high prices in auctions over the past year or two. Specimens have sold for more than \$1,000 in MS65. This variety is not very rare; 46 uncirculated specimens have been certified by ANACS and more have been certified by NGC, PCGS, and SEGS. The premiums paid for this variety recently is higher than those for OMMs and many overdates, which are many times rarer and have a higher collector demand. This variety is dramatic, but there are several RPMs that are equal or greater in spread of this RPM. It is the opinion of these authors that the prices realized sometimes can be the result of factors such as promotion, individuals attempting to increase the value of their specimens, and individuals purchasing these varieties not researching factors such as pricing history, rarity, and demand. Prices such as these that are extreme should not be used to measure the value of varieties such as this.



1953D Misplaced Mintmark

WRPM-040

Cross Reference: None

Description: *Repunched Mintmark.*

The full outline of the front of the D is seen on the front of Lincoln's jacket. This is also a tripled punched mintmark with one D south seen below the bottom and the second D south west seen to the left.



Die Markers:

Obverse - None noted.

Reverse - None noted.

	VF	XF	AU	MS60	MS63	MS65RD
Value :	10	15	25	35	75	125

ANACS Pop.: [0]

Comments : The shape and size of the outline is the same as a D mintmark. Varieties such as these went unnoticed for years, probably because collectors were not looking in such unusual places such as this.



1956D Misplaced Mintmark

RPM-008

Cross Reference: FS-22, RPM #8, Breen 2219, WRPM-008

Description: *Repunched Mintmark.*

Repunched D wide south with the first D being completely separated from the final D.

Die Markers:

Obverse - Die crack across the bottom part of the bust.

Reverse - None noted.

	VF	XF	AU	MS60	MS63	MS65RD
Value :	10	15	25	35	75	125



ANACS Pop.: [177] (2) 67RD, (14) 66RD, (69) 65RD

Comments : This is a well-known and sought after variety. Many BU specimens have been found to date. This variety can usually be found for sale in Teletrade and in other auctions. ANACS has certified more than 170 uncirculated specimens to date. The year 1956 has many unusual varieties. Is this the result of carelessness or someone at the Mint purposefully creating these die varieties?



1956D Misplaced Mintmark

WRPM-018

Cross Reference: None

Description: *Repunched Mintmark.*

Repunched D wide south, with the first D being completely separated from the final D.

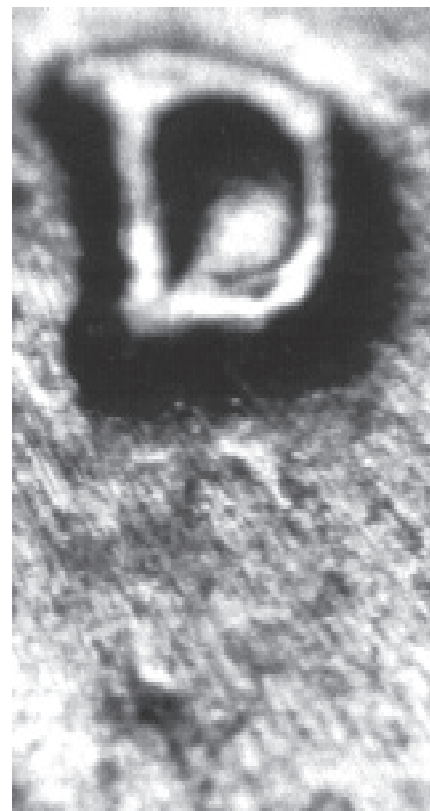
Die Markers:

Obverse - Small die gouge just southeast of the G in GOD. Short die crack in hair just above back of forehead.

Reverse - None noted.

	F	VF	XF	AU	MS63	MS65RD
Value :	12	18	30	50		120 225
ANACS Pop.:	[27]	(6)	66RD,	(11)	65RD,	(4) 64RD

Comments : This RPM looks similar to 1956D RPM-008 as the relative distance between the primary and repunched D is very close. But once you look at the relative location of the final D to the bottom of the 5, it is easy to tell the difference. This variety is much rarer than RPM-008, as only a few specimens have been found.



1956D Misplaced Mintmark

WRPM-023

Cross Reference: None

Description: *Repunched Mintmark.*

Repunched D wide north seen in the bottom of the 9.

Die Markers:

Obverse - None noted.

Reverse - None noted.



VF XF AU MS60 MS63 MS65RD

Value : 25 40 60 100 225 400

ANACS Pop.: [24] (4) 66RD, (10) 65RD, (7) 64RD

Comments : This variety is not easy to find. Later die stages are weak and not easily seen. The specimen shown is an early die stage.



1956D Misplaced Mintmark

WRPM-057

Cross Reference: None

Description: *Repunched Mintmark.*

What appears to be the outline of a D mintmark is seen above the top right of the normal D going into the 5 of the date.

Die Markers:

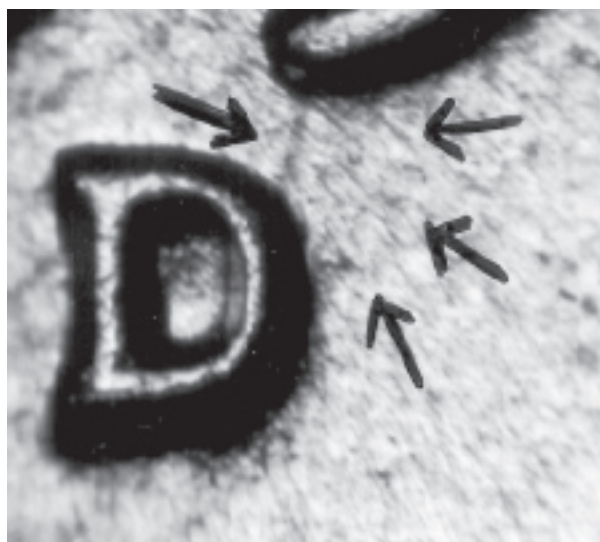
Obverse - None noted.

Reverse - None noted.



	VF	XF	AU	MS60	MS63	MS65RD
Value :	8	10	15	20	40	60
ANACS Pop.:	[0]					

Comments : Another new misplaced mintmark recently discovered by collectors examining their coins a little closer. Another reason to examine all 1956D Lincoln cents.



1956D Misplaced Mintmark

WRPM-053

Cross Reference: None

Description: *Repunched Mintmark.*

What appears to be the outline of a D mintmark is seen above the top right of the normal D touching the bottom of the 5.

Die Markers:

Obverse - None noted.

Reverse - None noted.



	VF	XF	AU	MS60	MS63	MS65RD
Value :	8	10	15	20	40	60
ANACS Pop.:	[0]					

Comments : There is still debate as to whether some of these varieties are the remnants of a mintmark. The shape and size is very close to that of a normal D mintmark. An earlier die state might show more of the D.



1959D Misplaced Mintmark

RPM-012

Cross Reference: WRPM-003

Description: *Repunched Mintmark.*

The left vertical bar of the D can be seen to the left of the lower part of the 9.

Die Markers:

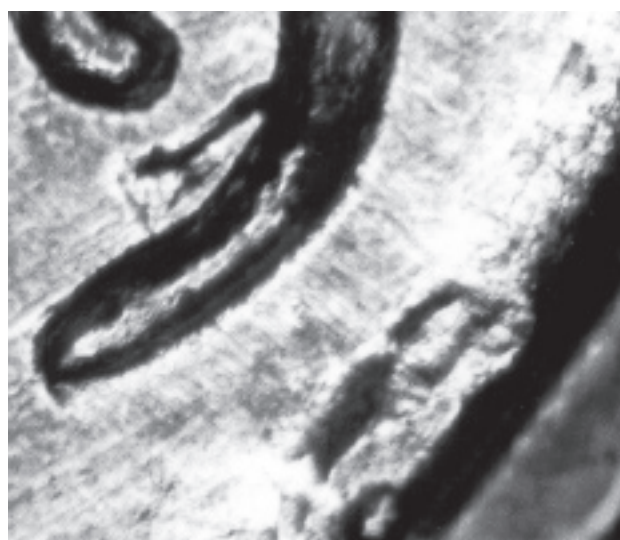
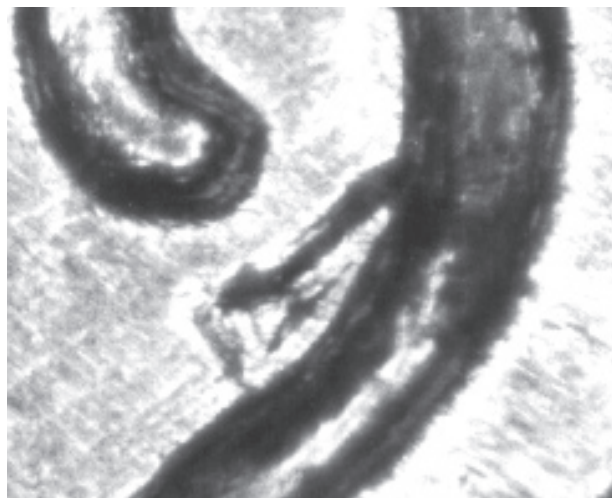
Obverse - Many die scratches through and above the date. Many die scratches above and behind the top of the head.

Reverse - Many die scratches through UNITED STATES OF AMERICA, ONE, and the left and right sides of the Memorial.



VF XF AU MS60 MS63 MS65RD
Value : 5 10 20 25 40 75
ANACS Pop.: [127] (16) 66RD, (39) 65RD

Comments : This variety is not accepted as a D by some specialists. It is not hard to find and can usually be found for sale on Teletrade and other auctions.



1960D Misplaced Mintmark DDO-001/RPM-001

Cross Reference: WRPM-103, DDO-001, FS-25.5, RPM #1, 1-O-III

Description: *Repunched Mintmark.*

Repunched D wide north seen on top of the primary D and touching the 9.

Die Markers:

Obverse - Stage A - No markers found. Stage B - Die scratch between 1 and 9 in the date. Stage C - Several die scratches running southwest from GOD. Stage D - Die break in the upper 6 in the date.

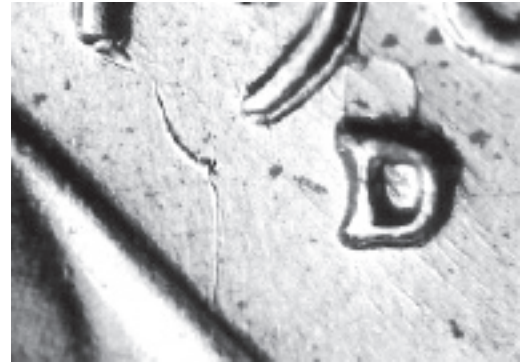
Reverse - None noted.

VF XF AU MS60 MS63 MS65RD

Value : 5 10 20 30 40 60

ANACS Pop.: [184] (2) 67RD, (23) 66RD, (90) 65RD

Comments : This die was first struck with a working hub with a large date, then struck with a working hub with a small date. The small date hub was only used on several working dies in the beginning of 1960. There are three known proof dies that were struck with both a combination of large and small hubs. This is the only known business die that was struck with both.



1960D Repunched Mintmark

RPM-017

Cross Reference: RPM #17, WRPM-017

Description: *Repunched Mintmark.*

Repunched D wide north seen on top.

Die Markers:

Obverse - None noted.

Reverse - Die scratches through UNITED STATES and ONE CENT.

	VF	XF	AU	MS60	MS63	MS65RD
Value	:.50	1	4	5	10	20
ANACS Pop.:	[6]	(4)	65RD,	(2)	64RD	

Comments : Not fully separated, but very dramatic and sought after.



1960D Repunched Mintmark

RPM-019

Cross Reference: RPM #19, WRPM-004

Description: *Repunched Mintmark.*

Repunched D wide north seen on top.

Die Markers:

Obverse - Die scratches in the field in front of the face.

Reverse - None noted.

	VF	XF	AU	MS60	MS63	MS65RD
Value	:.50	1	4	5	10	20
ANACS Pop.:	[12]	(8)	65RD,	(2)	64RD,	65RB

Comments : Not fully separated, but very dramatic. The year 1960 has an incredible number of RPMs; more than 150 different RPMs are known.



1960D Misplaced Mintmark

WRPM-147

Cross Reference: None

Description: *Repunched Mintmark.*

Repunched D wide north seen on top of the normal D with the top of the repunched D touching the 9.

Die Markers:

Obverse - None noted.

Reverse - None noted.



	VF	XF	AU	MS60	MS63	MS65RD
Value :	.50	3	8	10	20	40
ANACS Pop.:	[0]					

Comments : With so many collectors searching for RPMs on 1960Ds, it is surprising that this super RPM was not found earlier.



1961D Repunched Mintmark

RPM-007

Cross Reference: RPM #7, WRPM-007

Description: *Repunched Mintmark.*
Tripled punched D north and north.

Die Markers:

Obverse - None noted.

Reverse - None noted.

	VF	XF	AU	MS60	MS63	MS65RD
Value :	.50	1	4	5	10	20
ANACS Pop.:	[7]	66RD,	(3)	65RD,	(2)	64RD

Comments : Not fully separated, but very dramatic. The year 1961 is another year for a large number of RPMs known.



1961D Misplaced Mintmark

RPM-009

Cross Reference: RPM #9, WRPM-009

Description: *Repunched Mintmark.*
Repunched D wide north seen on top of the D touching the 9.

Die Markers:

Obverse - None noted.

Reverse - None noted.

	VF	XF	AU	MS60	MS63	MS65RD
Value :	.50	1	4	5	10	20
ANACS Pop.:	[7]	66RD,	(4)	65RD,	(2)	64RD

Comments : Not fully separated, but very dramatic and sought after.



1964D Misplaced Mintmark

WRPM-061

Cross Reference: None

Description: *Repunched Mintmark.*

Repunched D wide north seen above the top right side of the normal D with the top of the repunched D touching the 6.

Die Markers:

Obverse - None noted.

Reverse - None noted.



	VF	XF	AU	MS60	MS63	MS65RD
Value :	.50	3	8	10	20	40
ANACS Pop.:	[0]					

Comments : There are many more Lincoln cent RPMs than the other denominations during this period between 1960 through 1964, was this because Lincoln cents were less important, more dies were created, or something else?



1987D Misplaced Mintmark

WRPM-001

Cross Reference: None

Description: *Repunched Mintmark.*

The outline of a horizontal D is seen to the left and through the upper end of the 9

Die Markers:

Obverse - None noted.

Reverse - None noted.

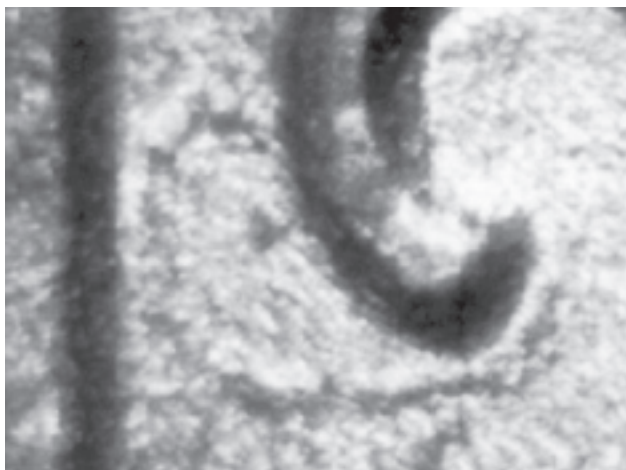


VF XF AU MS60 MS63 MS65RD

Value : 6 8 12 25 50 70

ANACS Pop.: [0]

Comments : A very dramatic misplaced mintmark, this is probably the result of a dropped mintmark punch.



***BUFFALO NICKEL
MISPLACED MINTMARKS***

1927D Repunched Mintmark

RPM-001

Cross Reference: WRPM-001, FS-16.7

Description: *Repunched Mintmark.*

Tripled punched D. The first D is seen north seen above the top. The second D is wide south seen below the right side of the bottom.

Die Markers:

Obverse - None noted.

Reverse - None noted.

	XF	AU	MS60	MS63	MS64	MS65
Value :	70	130	180	375	750	5000
ANACS Pop.:	[3]	(3)	64			

Comments : Dramatic Buffalo nickel RPMs like this are always highly sought after.



1929S Misplaced Mintmark

RPM-004

Cross Reference: WRPM-004

Description: *Repunched Mintmark.*

Repunched S wide south touching the rim.

Die Markers:

Obverse - None noted.

Reverse - None noted.

	XF	AU	MS60	MS63	MS64	MS65
Value :	30	70	150	200	325	500
ANACS Pop.:	[0]					

Comments : This variety is included because the mintmark is into the rim. It is also very rare as few specimens have been found.



1935S Misplaced Mintmark

RPM-010

Cross Reference: WRPM-010

Description: *Repunched Mintmark.*

Repunched S wide south touching the rim.

Die Markers:

Obverse - None noted.

Reverse - None noted.

	XF	AU	MS60	MS63	MS64	MS65
Value :	20	30	50	90	125	200
ANACS Pop.:	[0]					

Comments : A higher grade specimen is needed to see if there are other parts of the S visible.



1936S Repunched Mintmark

RPM-001

Cross Reference: WRPM-001, RPM #1, FS-20

Description: *Repunched Mintmark.*

Repunched S wide south.

Die Markers:

Obverse - None noted.

Reverse - None noted.

	XF	AU	MS60	MS63	MS64	MS65
Value :	35	65	90	150	200	250
ANACS Pop.:	[42] (2) 66, (17) 65, (12) 64, (3) 63					

Comments : This variety is not touching the rim, but is included as it is well known and very dramatic.



BARBER DIME
MISPLACED MINTMARKS

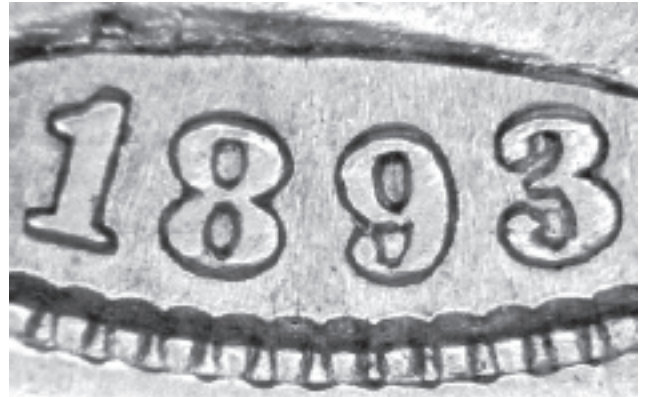
1893S Repunched Mintmark

RPM-001

Cross Reference: RPM #1, Breen 3484, FS-009, L-101

Description: *Repunched Mintmark.*

Repunched S wide east with the upper serif, and middle and lower curve of the repunched S seen to the right of the S. The top left of the curve is seen to the left of the upper serif. Late die states are much weaker.



Die Markers:

Obverse - Repunching in the date seen on the 93.

Reverse - Small die chips seen on the curve of the repunched S.

	VF	XF	AU	MS60	MS63	MS65
Value	55	100	175	300	650	3500
ANACS Pop.:	[4] 62, (2) 61, 60					

Comments : The high price for an MS65 is the normal price for an MS65 without the variety. This variety is not difficult to find in low grades, it is well known and most coin dealers known to look for it. Beware of buying sight unseen as late die states are much weaker as seen in the bottom photo to the right.



1914D Misplaced Mintmark

RPM-001

Cross Reference: RPM #1

Description: *Repunched Mintmark.*

Repunched D wide northeast seen going into the wreath. The lower serif of the D is seen in the top right center of the normal D.

Die Markers:

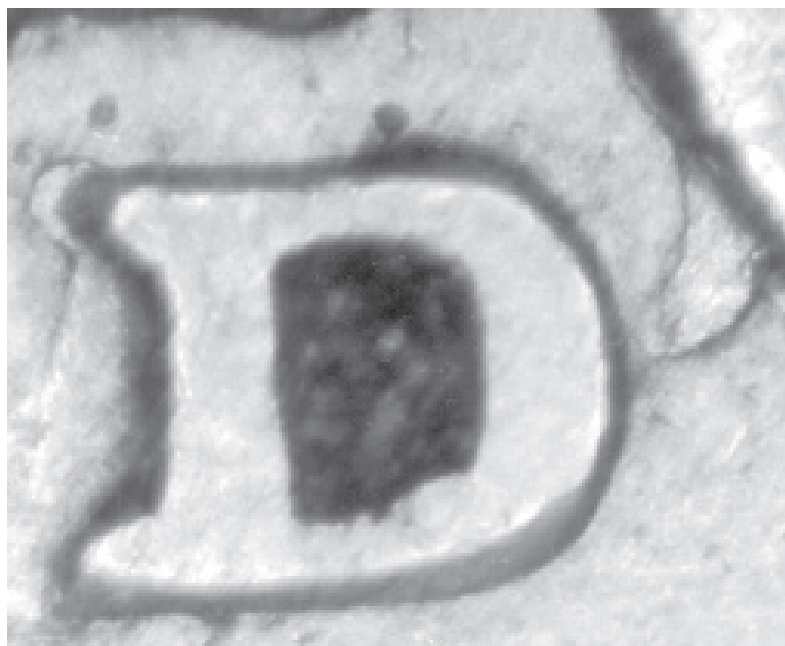
Obverse - None noted.

Reverse - Late die states show strike doubling on the left side of the D mintmark.



	VF	XF	AU	MS60	MS63	MS65
Value :	20	30	70	150	400	850
ANACS Pop.:	[4]	61	60	50	40	

Comments : 1914D Barber dimes have seven different RPMs known. This is the most for a single year and Mint for any of three Barber series. This variety is relatively common in lower grade, but difficult to locate in uncirculated grades. ANACS has certified two of these varieties in uncirculated grades and two in circulated grades.



***MERCURY DIME
MISPLACED MINTMARKS***

1941D Repunched Mintmark RPM-002

Cross Reference: WRPM-002, RPM #2

Description: *Repunched Mintmark.*

Repunched D wide south seen inside the bottom of the D and below the D.

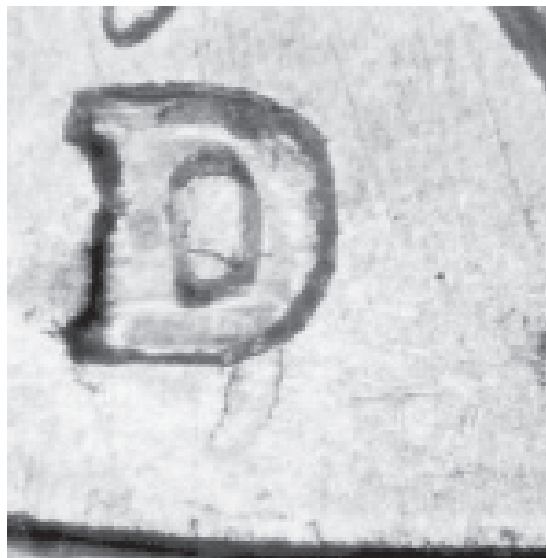
Die Markers:

Obverse - None noted.

Reverse - None noted.

	VF	XF	AU	MS60	MS63	MS65
Value :	3	5	10	25	40	75
ANACS Pop.:	[0]					

Comments : Not fully displaced, but very dramatic.



1945S Repunched Mintmark RPM-001

Cross Reference: WRPM-001, RPM #2

Description: *Repunched Mintmark.*

Tripled punched S. The first S is wide east with most of the lower curve seen to the right. The second S is wide south seen above the middle and below the bottom.

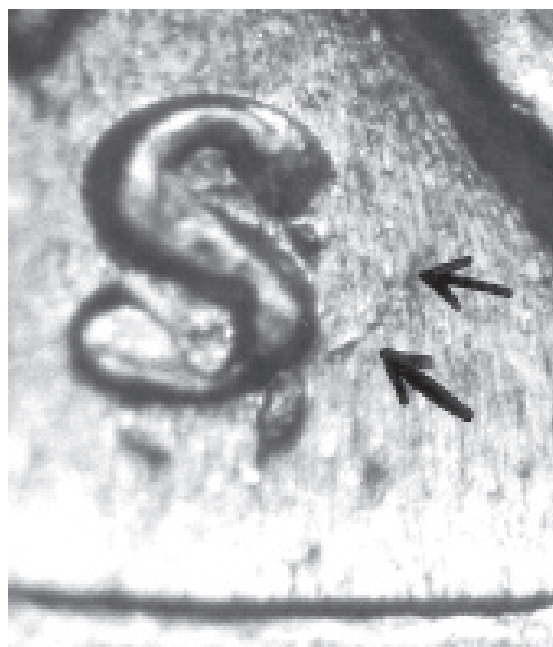
Die Markers:

Obverse - None noted.

Reverse - None noted.

	VF	XF	AU	MS60	MS63	MS65
Value :	10	15	30	60	90	130
ANACS Pop.:	[0]					

Comments : Not fully separated, this variety is rare, dramatic and sought after.



***ROOSEVELT DIME
MISPLACED MINTMARKS***

1952S Misplaced Mintmark

RPM-005

Cross Reference: None

Description: *Repunched Mintmark.*

Repunched S wide east with top of the S going into the torch.

Die Markers:

Obverse - None noted.

Reverse - None noted.

	VF	XF	AU	MS60	MS63	MS65
Value :	10	15	25	45	70	125
ANACS Pop.:	[0]					

Comments : A last minute new RPM, which is included because the mintmark is protruding into a device.



1964D Misplaced Mintmark

RPM-005

Cross Reference: FS-18.7, WRPM-005

Description: *Repunched Mintmark.*

Repunched D wide east with the lower left side of the D seen protruding from the torch.

Die Markers:

Obverse - None noted.

Reverse - None noted.

	VF	XF	AU	MS60	MS63	MS65
Value :	10	15	25	45	70	125
ANACS Pop.:	[6] 64, (4) 62, 61					

Comments : The 1964D has a number of nice varieties to search for, including several dramatic doubled die reverses and 10 different RPMs. This variety can be found in circulated grades, but uncirculated specimens are rare.



1969D Misplaced Mintmark

RPM-001

Cross Reference: FS-20.4

Description: *Repunched Mintmark.*

Repunched D wide northeast seen above the right side of the top of the D.

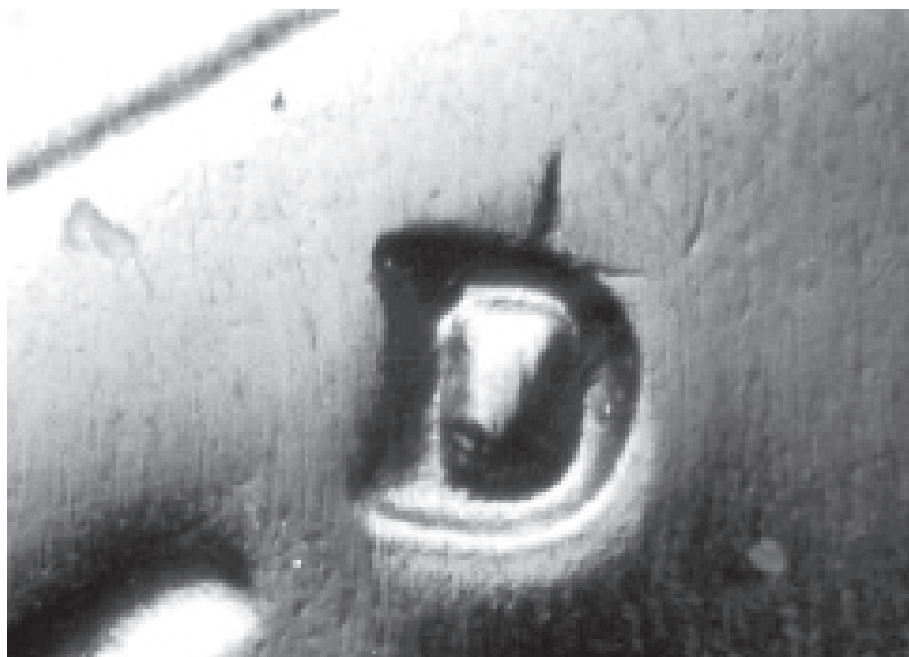
Die Markers:

Obverse - None noted.

Reverse - Die scratch from the bottom left branch through the U of PLURIBUS to a leaf.

	VF	XF	AU	MS60	MS63	MS65
Value :	2	3	5	15	25	45
ANACS Pop.:	[102]	(3)	67,	(19)	66,	(39) 65

Comments : This variety is found in 1969 Mint Sets. ANACS has certified 102 uncirculated specimens.



1981P Misplaced Mintmark

RPM-001

Cross Reference: WRPM-001

Description: *Repunched Mintmark.*

What appears to be a repunched P mintmark is seen above the normal P going into the neck.

Die Markers:

Obverse - None noted.

Reverse - None noted.



	VF	XF	AU	MS60	MS63	MS65
Value :	10	15	30	65	100	150
ANACS Pop.:	[0]					

Comments : A questionable variety which requires more research.

1982D Misplaced Mintmark

RPM-001

Cross Reference: WRPM-001

Description: *Repunched Mintmark.*

What appears to be a D mintmark is seen below the US of TRUST.

Die Markers:

Obverse - None noted.

Reverse - None noted.



	VF	XF	AU	MS60	MS63	MS65
Value :	10	15	30	65	100	150
ANACS Pop.:	[0]					

Comments : Another questionable variety which is difficult to believe because it is so far from the normal mintmark. If it is an RPM, it could have been the result of a dropped mintmark punch. If this proves to be a real RPM, it would be the most displaced mintmark known.

***BARBER QUARTER
MISPLACED MINTMARKS***

1893S Misplaced Mintmark

RPM-001

Cross Reference: RPM #1

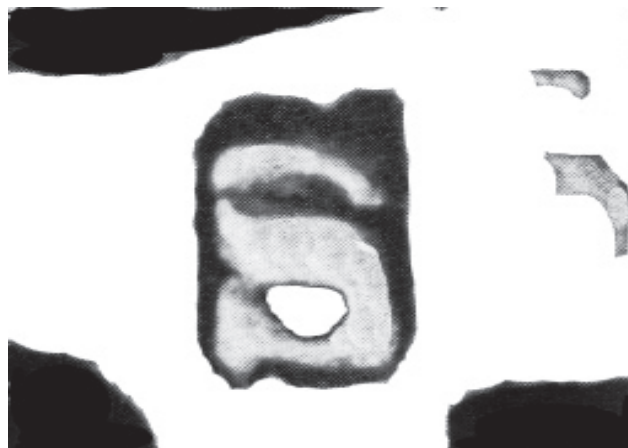
Description: *Repunched Mintmark.*

Repunched S wide east with the right side of the repunched S seen fully separated from the final S.

Die Markers:

Obverse - None noted.

Reverse - None noted.



F VF XF AU MS60 MS63

Value : 90 150 280 600 1200 2500

ANACS Pop.: [0]

Comments : This variety was listed in Wexler and Miller's RPM book that was published in 1983. Since then, there are no new confirmed specimens of this variety. ANACS has certified no specimens. The authors have been searching for years for this variety, but to no avail.

***WASHINGTON QUARTER
MISPLACED MINTMARKS***

1940D Misplaced Mintmark

RPM-002

Cross Reference: FS-12.4

Description: *Repunched Mintmark.*

Repunched D wide west with the bottom of the repunched D seen completely separated from the final D. The top left serif is also seen.

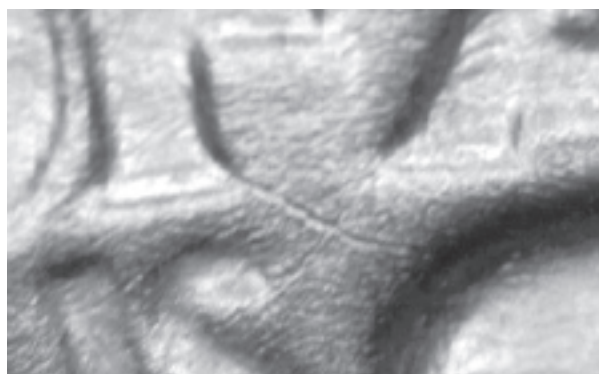
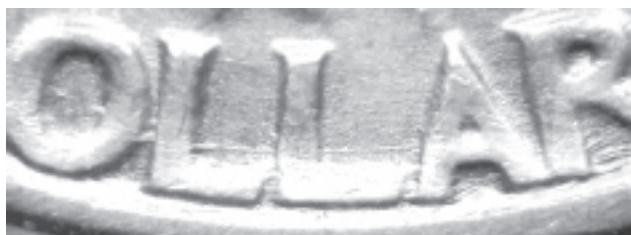
Die Markers:

Obverse - Many die scratches seen through IN GOD WE TRUST and LIB of LIBERTY.

Reverse - Nice die scratch from the F of OF to the top of the wing. Die scratch through the middle of OLLA of DOLLAR. Many small die scratches through QUARTER.

	VF	XF	AU	MS60	MS63	MS65
Value :	25	40	75	100	150	200
ANACS Pop.:	[7]	65,	(6)	64		

Comments : Relatively rare; can still be found with a little looking.



1957D Misplaced Mintmark

RPM-001

Cross Reference: None

Description: *Repunched Mintmark.*

The left and top sides of a D mintmark is seen above the left stem of the wreath.

Die Markers:

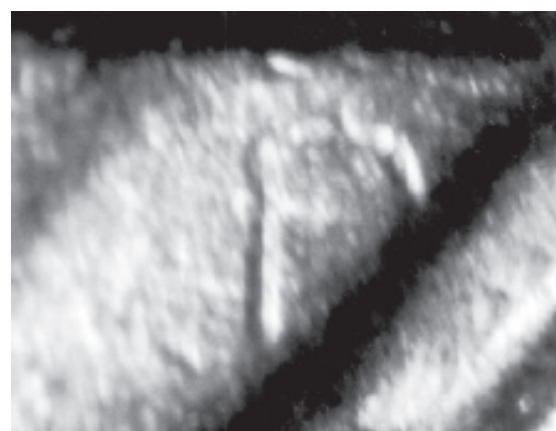
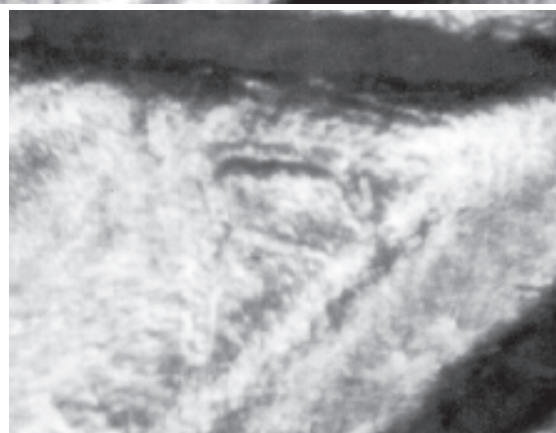
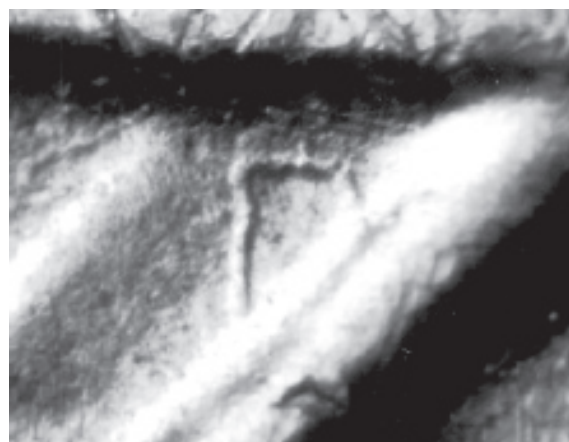
Obverse - None noted.

Reverse - Several die scratches through and above QUARTER. Die scratches seen through most of UNITED STATES OF AMERICA

	VF	XF	AU	MS60	MS63	MS65
Value :	15	20	30	40	75	125
ANACS Pop.:	[2] 65, 64					

Comments : This variety is extremely unusual.

First, because of its location and distance from the normal mintmark. How could this have not been done on purpose? Second, and more interesting, is that there are several dies that contain this misplaced mintmark. This particular variety also shows a normal RPM. There have been two other confirmed different varieties. Is this the result of a D placed on a working die, which was then used to make a working hub? More research is needed.



1957D Misplaced Mintmark

RPM-002

Cross Reference: None

Description: *Repunched Mintmark.*

The left and top sides of a D mintmark is seen above the left stem of the wreath.

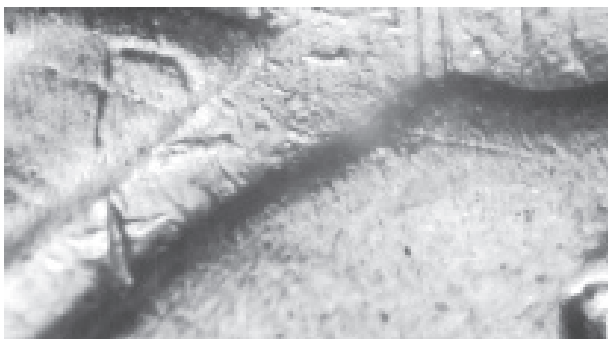
Die Markers:

Obverse - Short die scratch below the right side of the S in TRUST.

Reverse - Die scratch through the repunched D and through the left stem going into the field. Die scratch between the two upper inside leaves of the left branch. Die crack from the I of UNITED.

	VF	XF	AU	MS60	MS63	MS65
Value :	15	20	30	40	75	125
ANACS Pop.:	[2] 65, 64					

Comments : There is no question that this a different die than 1957D RPM-001, the location of the mintmark, and the die markers are different. The location of the repunched D is exactly the same, as is the angle of the D. The repunched D is tilted slightly forward.



1957D Misplaced Mintmark

RPM-003

Cross Reference: None

Description: *Repunched Mintmark.*

The left and top sides of a D mintmark is seen above the left stem of the wreath.

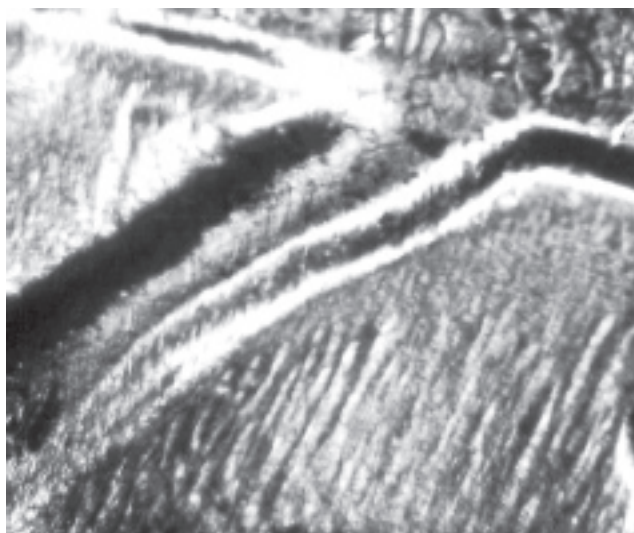
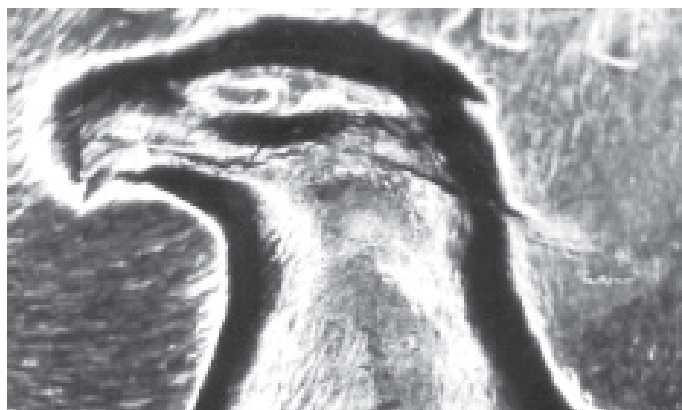
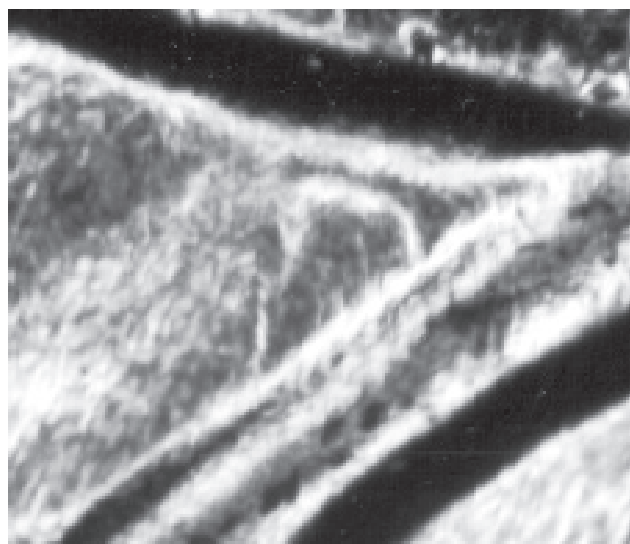
Die Markers:

Obverse - Die crack through the base of neck.
Die crack through the top of the head below
ER of LIBERTY.

Reverse - Die crack from the beak, through the
head, and into the field behind the head. Die
crack through the edge of the left wing.

	VF	XF	AU	MS60	MS63	MS65
Value :	15	20	30	40	75	125
ANACS Pop.:	[2] 65, 64					

Comments : A different reverse than RPM-001
and RPM-002. The location of the repunched
D, and the relative distance from the wreath is
the same as the two varieties.



***LIBERTY SEATED HALF DOLLAR
MISPLACED MINTMARKS***

1877S Misplaced Mintmark

RPM-002

Cross Reference: RPM #2, WB-103

Description: *Repunched Mintmark.*

Repunched S wide west, with the outline of an S seen to the left of the normal S. The upper portion of the S is more visible.

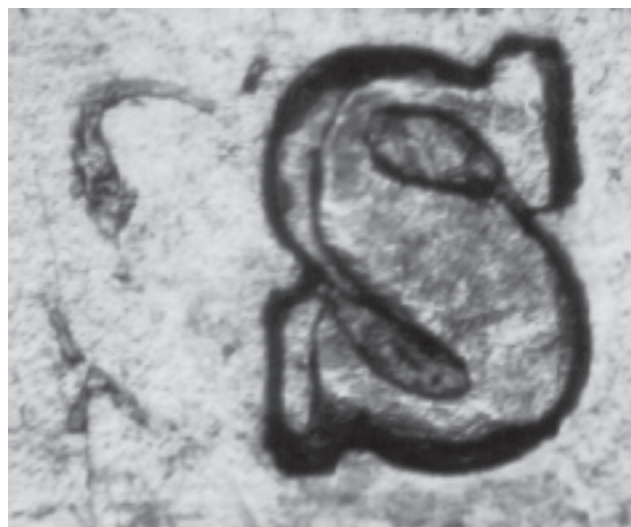
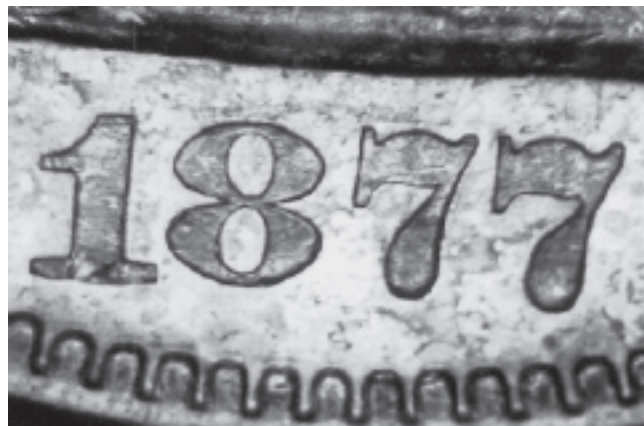
Die Markers:

Obverse - None noted.

Reverse - Strike doubling seen on UNITED STATES. Strike doubling seen on the S mintmark.

	VF	XF	AU	MS60	MS63
Value :	60	80	220	375	1000
ANACS Pop.:	[1]	60			

Comments : This variety is listed in the RPM book by Wexler and Miller, but no photos is shown in that book. It was a surprise to see how dramatic this variety was when this variety was seen right before the book was getting ready for print.



***LIBERTY WALKING HALF DOLLAR
MISPLACED MINTMARKS***

1944S Repunched Mintmark

RPM-003

Cross Reference: None

Description: *Repunched Mintmark.*
Repunched S wide southwest.

Die Markers:

Obverse - None noted.

Reverse - None noted.

	XF	AU	MS60	MS63	MS64	MS65
Value :	20	40	60	120	250	470
ANACS Pop.:	[0]					



Comments : This variety is included because the mintmark is one of the more dramatic. It is also very rare as few specimens have been found.

1946S Repunched Mintmark

RPM-001

Cross Reference: RPM #1

Description: *Repunched Mintmark.*
Repunched S wide north.

Die Markers:

Obverse - None noted.

Reverse - None noted.

	XF	AU	MS60	MS63	MS64	MS65
Value :	20	35	50	75	125	150
ANACS Pop.:	[46] (23) 65, (19) 64, 63, 62					



Comments : This variety is well known and can be found with some looking.

***QUARTER EAGLE GOLD DOLLAR
MISPLACED MINTMARKS***

1846D Misplaced Mintmark

RPM-001

Cross Reference: RPM #1

Description: *Repunched Mintmark.*

Repunched D wide north with the top of the D inside the wreath.

Die Markers:

Obverse - None noted.

Reverse - Die crack through the top of ERI of AMERICA.



ANACS Pop.: [18] 55, (2) 53, (2) 50, (3) 45

Comments : This variety is common if you find a 1846D five-dollar gold piece as only three dies were used for Denver in 1946. Therefore, one in three coins should have this variety. The 1946D five-dollar gold pieces are rare and expensive for the date and mintmark. There are no premiums for this variety as the base price for this coin is so high and because this variety is not uncommon for this date and mint.

